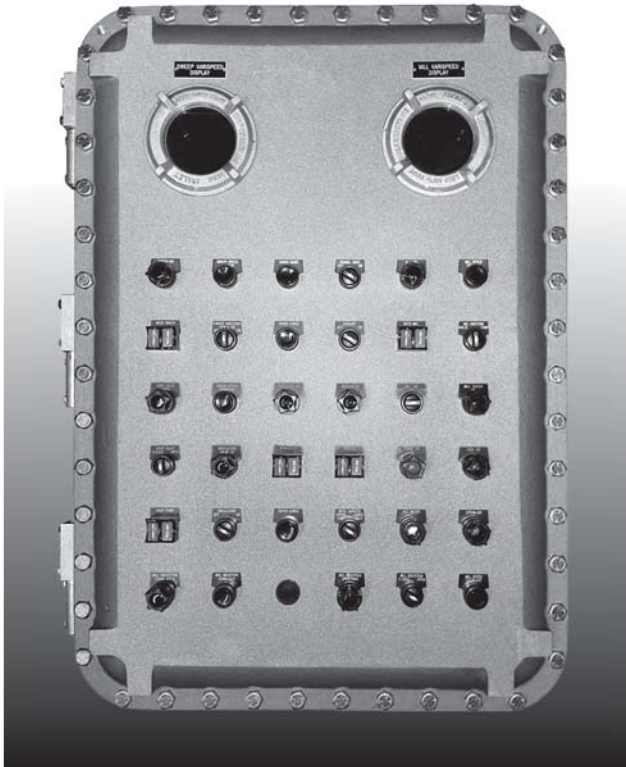


# XCE: Explosionproof Control Enclosures

## XCEX: Flameproof Control Enclosures

## XCEQ: Explosionproof Quad-Lead Control Enclosures

## XJF: Explosionproof Junction Boxes



### STANDARD FEATURES

- 80 standard sizes available
- Corrosion resistant, copper free aluminum
- Pre-drilled hinge holes (hinge optional)
- Pre-drilled mounting panel bosses (mounting panel optional)
- Type 4 watertight Nitrile gasket
- High strength steel cover bolts (zinc plated and coated)
- Internal grounding screws. External earthing provided on XCEX
- Removable lifting eye bolts (18x24 and larger)
- Lid-lifter cover alignment device (1824 and larger)
- Cast-on mounting lugs / feet
- Tumbleblast, natural aluminum finish

### DESIGN OPTIONS

- Stainless steel cover bolts for Type 4X corrosion protection
- Mounting panels - Available in galvanized steel (XSM), aluminum (XSA), or phenolic (XSB)
- Aluminum hinge kits with stainless steel hardware
- Conduit (NPT & metric) and device (NPSM) drilling & tapping
- Operators and auxiliary devices such as breather / drains and flame arrestors
- Quad lead, quick thread cover bolts (designate XCEQ when ordering, not available on XCEX)
- Window kits - Round (up to 8" viewing diameter or square / rectangular (up to 13" x 13"))
- Custom machining - Milling, counter-boring, spot-facing, blind drilled holes entries, chamfers

### CONSTRUCTION MATERIAL


- Enclosure - Copper free aluminum (3/10 of 1%)
- Cover bolts - Steel, zinc plated and coated
- Hinge kits - Copper free aluminum with stainless steel hardware

### CERTIFICATIONS

#### XCE Series:

Class I, Division 1, Gas Groups BCD	UL 1203
Class II, Division 1, Gas Groups EFG	CSA C22.2 No. 30
Class III	
Type 4, 7, 9	UL 50
Type 4X (w/ SS cover bolts)	

#### XCEX Series:

Class I, Division 1, Gas Groups BCD	UL 1203
Class II, Division 1, Gas Groups EFG	CSA C22.2 No. 30
Class III	
Type 4, 7, 9	UL 50
Type 4X (w/ SS cover bolts)	
Class I, Zone 1, AExd IIB	UL 60079-0 / UL 60079-1
Exd IIB	CSA 60079-0 / CSA 60079-1
0539  II 2 GD Ex d II B+H <sub>2</sub> (Optional)	EN 60079-0 / EN 60079-1
IP66	IECEX UL 10.0046U

**NOTE:** Where reference is made to Class I and Class II hazardous locations, the equipment is suitable for both Division 1 and Division 2 locations.

## CERTIFICATIONS

## XJF SERIES

**CERTIFICATIONS**

Class I, Division 1 Groups B\*,C,D  
 Class II, Groups E,F,G  
 TYPE 4 (w/N4 suffix)  
 IP 66



LISTED 437S



\*N4 suffix may affect Group B approval, consult factory.

## XCE/XCEQ SERIES

**CERTIFICATIONS**

Class I, Division 1, Groups B\*,C,D  
 Class II, Groups E,F,G  
 Class III  
 TYPE 4, (w/N4 suffix)  
 TYPE 4X (w/SS cover bolts)



\*Specify Group B if required w/N4 suffix

## XCEX SERIES

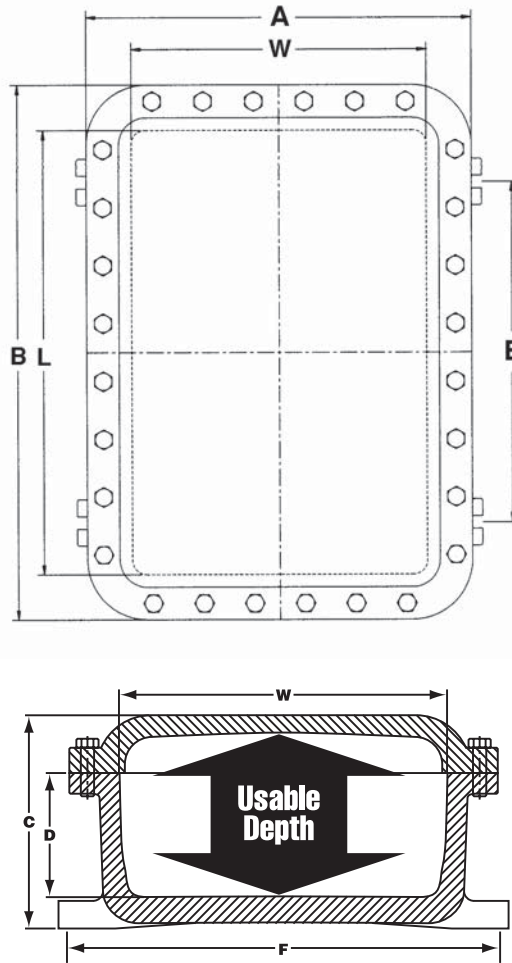
**CERTIFICATIONS**

Class I, Division 1, Groups B, C,D	TYPE 4, (w/N4 suffix)
Class II, Groups E,F,G	TYPE 4X (w/SS cover bolts)
Class III	IECEx UL 10.0046U
Class I, Zone 1, AEx d IIB	
Ex d IIB	
Epsilon 07 ATEX 2251U	
0539 Ⓢ II 2GD Ex d II B (Optional)*	
Ex d IIB+H <sub>2</sub> (Optional)*	
Ex tD A21: IP 66	



\*Specify ATEX if required

**NOTE:** Where reference is made to Class I and Class II hazardous locations, the equipment is suitable for both Division 1 and Division 2 locations.



## DESIGN OPTIONS

### MOUNTING PANS Three Materials Available:

**Steel:** (XSM) Galvanized 12 gauge steel plate. The catalog number includes the steel mounting pan complete with ¼" high spacers and stainless steel mounting screws.

**Aluminum:** (XSA) Consult factory for availability.

**Phenolic:** (XSB) A special phenolic laminated material that has high mechanical and dielectric strength. It is excellent for mounting and wiring control equipment. The catalog number includes the phenolic board, ⅜" thick, complete with ¼" high spacers and stainless steel mounting screws.

- NOTES**
1. No installation charge when customer specifies factory installation of mounting pan.
  2. Enclosures are pre-drilled for mounting panel unless otherwise specified.

### HINGE SETS

Made of extruded aluminum alloy consisting of two sections, female and male (with stainless steel pin) and four stainless steel hex head bolts. Designed to allow right or left hand removable or non-removable installation. Unless specified, left hand removable hinge installation will be furnished by factory when hinged enclosures are ordered.

- NOTES**
1. Catalog numbers represent complete hinge sets necessary for enclosure assembly.
  2. Enclosures are pre-drilled for hinge kit unless otherwise specified.

# XCE SERIES & XJF

XCE/XJF Catalog #	ENCLOSURE										PANS AND HINGES							
	Inside Nom. Dimensions			Usable Depth	Overall Dimensions			Mounting Lug CL to CL		Mtg. Bolt Size	Ship Weight	Pan Catalog #			Nom. Dimensions		Steel Pan Weight	Hinge Cat #
	W	L	D		A	B	C	E	F			Steel	Alum.	Phen	W	H		
041604	4	16	4	4 3/4	7 1/4	19 1/4	6	12 1/2	6 3/4	3/8	25	XSM0416	XSA0416	XSB0416	3 1/4	15 1/4	1 1/2	XHB-2
060804	6	8	4	4 3/8	9 1/4	11 1/4	5 1/8	4 1/2	9 3/8	3/8	21	XSM0608	XSA0608	XSB0608	5 1/8	7 3/8	1	XHB-2
060805	6	8	5	5 3/8	9 1/4	11 1/4	6 1/8	4 1/2	9 3/8	3/8	23	XSM0608	XSA0608	XSB0608	5 3/8	7 3/8	1	XHB-2
060806	6	8	6	6 3/8	9 1/4	11 1/4	7 1/8	4 1/2	9 3/8	3/8	25	XSM0608	XSA0608	XSB0608	5 3/8	7 3/8	1	XHB-2
061105	6	11	5	5 7/8	9 1/4	14 1/4	7 3/8	7 1/2	9 3/8	3/8	24	XSM0611	XSA0611	XSB0611	5 3/8	10 3/8	1 1/2	XHB-2
061204	6	12	4	4 3/4	9 1/4	15 1/4	6 1/8	8 1/2	9 3/8	3/8	24	XSM0612	XSA0612	XSB0612	5 3/8	11 3/8	1 3/4	XHB-2
061206	6	12	6	6 3/4	9 1/4	15 1/4	8 1/8	8 1/2	9 3/8	3/8	29	XSM0612	XSA0612	XSB0612	5 3/8	11 3/8	1 3/4	XHB-2
061305	6	13	5	5 7/8	9 1/4	16 1/4	7 3/8	9 1/2	9 3/8	3/8	26	XSM0613	XSA0613	XSB0613	5 3/8	12 3/8	2	XHB-2
071004	7	10	4	4 3/4	10 3/8	13 3/8	6 3/8	6 1/2	9 3/4	3/8	27	XSM0710	XSA0710	XSB0710	6 3/8	9 3/4	1 1/4	XHB-2
071006	7	10	6 1/8	6 3/4	10 3/8	13 3/8	8 3/8	6 1/2	9 3/4	3/8	31	XSM0710	XSA0710	XSB0710	6 3/8	9 3/4	1 1/4	XHB-2
071805	7	18 1/4	5	5 3/4	10 3/8	21 3/8	7 3/8	14 1/2	9 3/4	3/8	55	XSM0718	XSA0718	XSB0718	6 3/8	17 3/8	2 1/2	XHB-2
080804	8	8	4	4 13/16	11 3/8	11 3/8	6 3/8	4 1/4	11	3/8	24	XSM0808	XSA0808	XSB0808	7	7	1 1/4	XHB-2
080806	8	8	6	6 13/16	11 3/8	11 3/8	8 3/8	4 1/4	11	3/8	28	XSM0808	XSA0808	XSB0808	7	7	1 1/4	XHB-2
080808	8	8	8	8 13/16	11 3/8	11 3/8	10 3/8	4 1/4	11	3/8	35	XSM0808	XSA0808	XSB0808	7	7	1 1/4	XHB-2
081004	8	10	4	4 3/4	11 3/8	13 3/8	6 1/4	6 1/2	10 3/4	3/8	30	XSM0810	XSA0810	XSB0810	7	9 3/8	1 1/2	XHB-2
081006	8	10	6	6 3/4	11 3/8	13 3/8	8 1/4	6 1/2	10 3/4	3/8	34	XSM0810	XSA0810	XSB0810	7	9 3/8	1 1/2	XHB-2
081008	8	10	8	8 3/4	11 3/8	13 3/8	10 1/4	6 1/2	10 3/4	3/8	39	XSM0810	XSA0810	XSB0810	7	9 3/8	1 1/2	XHB-2
081204	8	12	4	4 3/4	11 3/8	15 3/8	6 1/4	8 1/2	10 3/4	3/8	34	XSM0812	XSA0812	XSB0812	6 7/8	10 7/8	2 1/4	XHB-2
081206	8	12	6	6 3/4	11 3/8	15 3/8	8 1/4	8 1/2	10 3/4	3/8	42	XSM0812	XSA0812	XSB0812	6 7/8	10 7/8	2 1/4	XHB-2
081208	8	12	8	8 3/4	11 3/8	15 3/8	10 1/4	8 1/2	10 3/4	3/8	48	XSM0812	XSA0812	XSB0812	6 7/8	10 7/8	2 1/4	XHB-2
091105	9	11	5	5 3/4	12 3/8	14 3/8	7 3/8	7 1/2	12	3/8	41	XSM0911	XSA0911	XSB0911	8	10	2 1/2	XHB-2
101004	10	10	4	4 3/4	13 3/8	13 3/8	6 3/8	6 1/2	13	3/8	34	XSM1010	XSA1010	XSB1010	8 7/8	8 7/8	2 1/2	XHB-2
101006	10	10	6	6 3/4	13 3/8	13 3/8	8 3/8	6 1/2	13	3/8	44	XSM1010	XSA1010	XSB1010	8 7/8	8 7/8	2 1/2	XHB-2
101008	10	10	8	8 3/4	13 3/8	13 3/8	10 3/8	6 1/2	13	3/8	50	XSM1010	XSA1010	XSB1010	8 7/8	8 7/8	2 1/2	XHB-2
101206	10	12	6 1/4	7 1/4	13 3/8	15 3/8	8 7/8	8 1/2	13	3/8	46	XSM1012	XSA1012	XSB1012	10 7/8	8 7/8	3	XHB-2
101404	10	14	4	4 3/4	13 3/8	17 3/8	6 7/8	10 5/8	13	3/8	42	XSM1014	XSA1014	XSB1014	8 7/8	12 7/8	3 1/2	XHB-2
101406	10	14	6	6 3/4	13 3/8	17 3/8	8 7/8	10 5/8	13	3/8	49	XSM1014	XSA1014	XSB1014	8 7/8	12 7/8	3 1/2	XHB-2
101408	10	14	8	8 3/4	13 3/8	17 3/8	10 1/2	10 5/8	13	3/8	57	XSM1014	XSA1014	XSB1014	8 7/8	12 7/8	3 1/2	XHB-2
101410	10	14	10	10 3/4	13 3/8	17 3/8	12 1/2	10 5/8	13	3/8	62	XSM1014	XSA1014	XSB1014	8 7/8	12 7/8	3 1/2	XHB-2
121204	12	12	4	5	16 1/4	16 1/4	6 13/16	8 3/8	16	1/2	60	XSM1212	XSA1212	XSB1212	10 7/8	10 7/8	3 3/4	XHC-2
121206	12	12	6	7	16 1/4	16 1/4	8 13/16	8 3/8	16	1/2	68	XSM1212	XSA1212	XSB1212	10 7/8	10 7/8	3 3/4	XHC-2
121208	12	12	8	9	16 1/4	16 1/4	10 13/16	8 3/8	16	1/2	80	XSM1212	XSA1212	XSB1212	10 7/8	10 7/8	3 3/4	XHC-2
121804	12	18	4	4 3/4	16 1/4	22 1/4	6 3/4	14 1/8	16	1/2	85	XSM1218	XSA1218	XSB1218	10 1/2	16 1/2	5 1/2	XHC-2
121806	12	18	6	6 3/4	16 1/4	22 1/4	8 3/4	14 1/8	16	1/2	93	XSM1218	XSA1218	XSB1218	10 1/2	16 1/2	5 1/2	XHC-2
121808	12	18	8	8 3/4	16 1/4	22 1/4	10 3/4	14 1/8	16	1/2	101	XSM1218	XSA1218	XSB1218	10 1/2	16 1/2	5 1/2	XHC-2
122005	12	20	5	5 3/4	16 1/4	24 1/4	8 3/8	14 3/8	16	1/2	104	XSM1220	XSA1220	XSB1220	11	19	6 1/2	XHC-2
122404	12	24	4	4 3/8	16 1/4	24 1/4	7 1/4	18 3/8	16	1/2	115	XSM1224	XSA1224	XSB1224	11	23	8	XHC-2
122406	12	24	6	6 13/16	16 1/4	28 1/4	9 1/4	18 3/8	16	1/2	127	XSM1224	XSA1224	XSB1224	11	23	8	XHC-2
122408	12	24	8	8 13/16	16 1/4	28 1/4	11 1/4	18 3/8	16	1/2	142	XSM1224	XSA1224	XSB1224	11	23	8	XHC-2
122410	12	24	10	10 13/16	16 1/4	28 1/4	13 1/4	18 3/8	16	1/2	154	XSM1224	XSA1224	XSB1224	11	23	8	XHC-2

- NOTES**
- To indicate Quad-Lead bolt option, add suffix "Q" after XCE. (Not available on XCEX models.)
  - Operators, windows and hinges are ordered separately.
  - XCEX Ex d approval optional.
  - To indicate Type 4 / IP66 option, add suffix "N4" after size (catalog number).
  - Where reference is made to Class I and Class II hazardous locations, the equipment is suitable for both Division 1 and Division 2 locations.
  - Enclosures are pre-drilled for mounting panel and hinge kit unless otherwise specified.

EXPLOSIONPROOF  
XCE/XJF Enclosures

EXPLOSIONPROOF ENCLOSURES  
**XCE SERIES & XJF**

XCE/XJF Catalog #	ENCLOSURE											PANS AND HINGES						
	Inside Nom. Dimensions			Usable Depth	Overall Dimensions			Mounting Lug CL to CL		Mtg. Bolt Size	Ship Weight	Pan Catalog #			Nom. Dimensions		Steel Pan Weight	Hinge Cat #
	W	L	D		A	B	C	E	F			Steel	Alum.	Phen	W	H		
123006	12	30	6	6 1/16	16 3/4	34 1/4	9 5/8	23	16	1/2	180	XSM1230	XSA1230	XSB1230	10 3/4	28 3/4	9 3/4	XHC-2
123604	12	36	4	4 1/16	16 1/4	40 1/4	7 1/16	29	16	1/2	200	XSM1236	XSA1236	XSB1236	10 3/4	34 3/4	11 3/4	XHC-3
123606	12	36	6	6 1/16	16 1/4	40 1/4	9 1/16	29	16	1/2	212	XSM1236	XSA1236	XSB1236	10 3/4	34 3/4	11 3/4	XHD-3
123608	12	36	8	8 1/16	16 1/4	40 1/4	11 1/16	29	16	1/2	232	XSM1236	XSA1236	XSB1236	10 3/4	34 3/4	11 3/4	XHD-3
124608	12	46	8	8 1/16	16 1/4	50 1/4	11 1/16	39	16	5/8	280	XSM1246	XSA1246	XSB1246	10 3/4	44 3/4	15	XHD-4
141404	14	14	4	5	18 1/4	18 1/4	7 1/8	9 3/4	17 3/4	1/2	91	XSM1414	XSA1414	XSB1414	12 7/8	12 7/8	5	XHC-2
141406	14	14	6	7	18 1/4	18 1/4	9 1/4	9 3/4	17 3/4	1/2	97	XSM1414	XSA1414	XSB1414	12 7/8	12 7/8	5	XHC-2
141408	14	14	8	9	18 1/4	18 1/4	11 1/8	9 3/4	17 3/4	1/2	103	XSM1414	XSA1414	XSB1414	12 7/8	12 7/8	5	XHC-2
142210	14	22	10	11 1/4	18 1/4	26 1/4	13 3/8	16 1/2	17 3/4	1/2	181	XSM1422	XSA1422	XSB1422	12 7/8	20 7/8	8	XHD-2
142213	14	22	10	13	18 1/4	26 1/4	15 1/8	16 1/2	17 3/4	1/2	235	XSM1422	XSA1422	XSB1422	12 7/8	20 7/8	8	XHD-2
142806	14	28	6	7 13/16	18 1/4	32 1/4	9 9/16	22 1/2	17 3/4	1/2	120	XSM1428	XSA1428	XSB1428	12 7/8	26 7/8	10 3/4	XHF-2
161604	16	16	4	5 3/8	20 7/8	20 7/8	7 15/16	11	19 3/4	5/8	123	XSM1616	XSA1616	XSB1616	14 3/4	14 3/4	6 3/4	XHD-2
161606	16	16	6	7 3/8	20 7/8	20 7/8	9 15/16	11	19 3/4	5/8	135	XSM1616	XSA1616	XSB1616	14 3/4	14 3/4	6 3/4	XHD-2
161608	16	16	8	9 3/8	20 7/8	20 7/8	11 15/16	11	19 3/4	5/8	156	XSM1616	XSA1616	XSB1616	14 3/4	14 3/4	6 3/4	XHD-2
162406	16	24	6	7 13/16	20 7/8	28 7/8	10 3/8	18 3/8	19 3/4	5/8	190	XSM1624	XSA1624	XSB1624	14 1/2	22 1/2	10 1/4	XHF-2
162408	16	24	8	9 13/16	20 7/8	28 7/8	12 3/8	18 3/8	19 3/4	5/8	209	XSM1624	XSA1624	XSB1624	14 1/2	22 1/2	10 1/4	XHF-2
162410	16	24	10	11 13/16	20 7/8	28 7/8	14 3/8	18 3/8	19 3/4	5/8	225	XSM1624	XSA1624	XSB1624	14 1/2	22 1/2	10 1/4	XHF-2
162806	16	28	6	6 13/16	20 1/2	32 15/16	9 1/2	22 1/2	19 3/4	5/8	220	XSM1628	XSA1628	XSB1628	26 1/2	14 1/2	12	XHF-2
163010	16	30	10	11 1/8	20 1/2	34 1/2	13 3/8	23	19 3/4	5/8	300	XSM1616	XSA1616	XSB1616	14 3/4	14 3/4	6 3/4	XHD-2
63406	16	34	6	6 15/16	20 1/2	38 1/2	9 1/2	27	19 3/4	5/8	277	XSM1630	XSA1630	XSB1630	14 1/2	28 1/2	12 1/2	XHF-2
164610	16	46	10	11 13/16	20 7/8	50 7/8	14 9/16	39	19 3/4	5/8	390	XSM1646	XSA1646	XSB1646	14 1/2	44 1/2	20 1/4	XHF-4
181804	18	18	4	5 13/16	22 7/8	22 7/8	8 1/2	13	21 3/4	5/8	154	XSM1818	XSA1818	XSB1818	16 3/4	16 3/4	8 3/4	XHF-2
181806	18	18	6	7 13/16	22 7/8	22 7/8	10 1/2	13	21 3/4	5/8	177	XSM1818	XSA1818	XSB1818	16 3/4	16 3/4	8 3/4	XHF-2
181808	18	18	8	9 13/16	22 7/8	22 7/8	12 1/2	13	21 3/4	5/8	200	XSM1818	XSA1818	XSB1818	16 3/4	16 3/4	8 3/4	XHF-2
182406	18	24	6	7 7/16	22 7/8	28 7/8	10 13/16	18 3/8	21 3/4	5/8	226	XSM1824	XSA1824	XSB1824	16 1/2	22 1/2	11 1/2	XHF-2
182408	18	24	8	9 7/16	22 7/8	28 7/8	12 13/16	18 3/8	21 3/4	5/8	239	XSM1824	XSA1824	XSB1824	16 1/2	22 1/2	11 1/2	XHF-2
182410	18	24	10	11 7/16	22 7/8	28 7/8	14 13/16	18 3/8	21 3/4	5/8	260	XSM1824	XSA1824	XSB1824	16 1/2	22 1/2	11 1/2	XHF-2
183008	18	30	8	9 3/8	22 7/8	34 7/8	12 13/16	23	21 3/4	5/8	293	XSM1830	XSA1830	XSB1830	16 1/2	28 1/2	14 3/4	XHF-2
183608	18	36	8	9 3/8	22 7/8	40 7/8	12 7/8	29	21 3/4	5/8	318	XSM1836	XSA1836	XSB1836	16 1/2	34 1/2	18	XHF-3
183610	18	36	10	11 3/8	22 7/8	40 7/8	14 7/8	29	21 3/4	5/8	340	XSM1836	XSA1836	XSB1836	16 1/2	34 1/2	18	XHF-3
203606*	20	36	6	7 3/8	24 7/8	40 7/8	10 7/8	29	24	5/8	385	XSM1616	XSA1616	XSB1616	14 3/4	14 3/4	6 3/4	XHD-2
203612*	20	36	12	12	25 3/8	41 3/8	15	29	24	5/8	405	XSM2048	XSA2048	XSB2048	46 1/2	18 1/2	27	XHF-4
204806***	20	48	6	7 7/8	24 7/8	52 7/8	10 7/8	41	24	5/8	430	XSM2424	XSA2424	XSB2424	22	22	15 1/4	XHF-2
204812*	20	48	12	14 1/4	25 3/8	53 3/8	15	41	24	5/8	555	XSM2424	XSA2424	XSB2424	22	22	15 1/4	XHF-2
242408	24	24	8	9 7/16	28 7/8	28 7/8	12 7/16	18 3/8	28	5/8	302	XSM2424	XSA2424	XSB2424	22	22	15 1/4	XHF-2
242410	24	24	10	11 7/16	28 7/8	28 7/8	14 7/16	18 3/8	28	5/8	330	XSM2424	XSA2424	XSB2424	22	22	15 1/4	XHF-2
243008	24	30	8	9 1/4	28 7/8	34 7/8	12 15/16	23	28	5/8	356	XSM2430	XSA2430	XSB2430	22	28	19 1/4	XHF-2
243608	24	36	8	9 1/4	28 7/8	40 7/8	12 7/16	29	28	5/8	408	XSM2436	XSA2436	XSB2436	22	34	23 1/2	XHF-3
243610***	24	36	10	11 1/4	28 7/8	40 7/8	14 7/8	29	28	5/8	433	XSM2436	XSA2436	XSB2436	22	34	23 1/2	XHF-3
323612*	32	36	12	12	37 3/4	41 3/4	15 1/2	29	36 1/8	5/8	691	XSM3236	XSA3236	XSB3236	29	33	28 3/4	XHF-3

**NOTES**

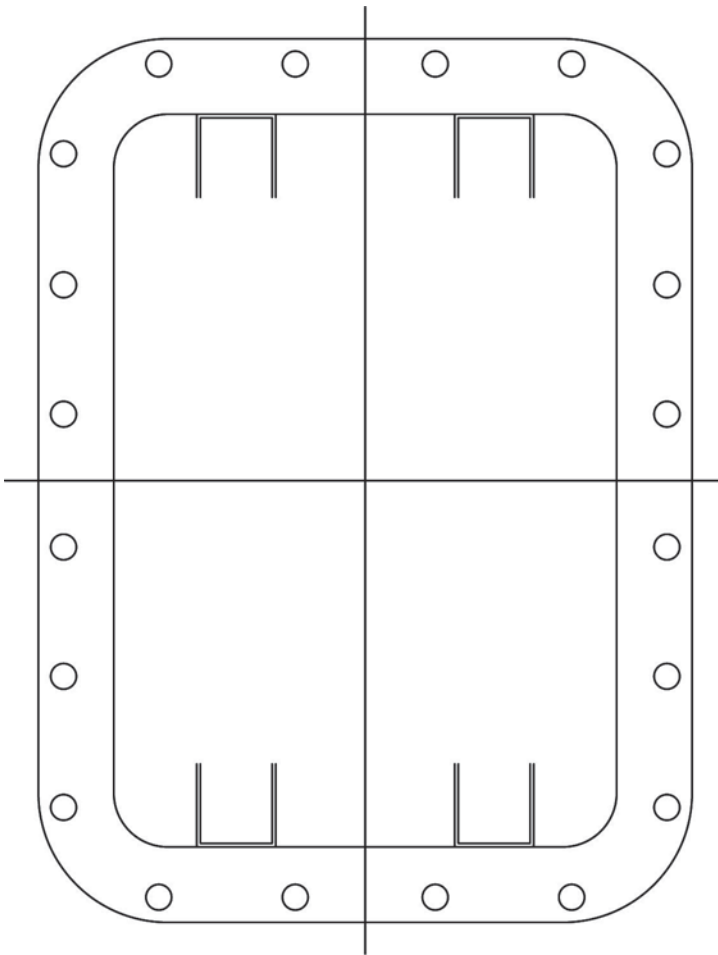
- To indicate Quad-Lead bolt option, add suffix "Q" after XCE. (Not available on XCEX models.)
- Operators, windows and hinges are ordered separately.
- Ex d approval optional on XCEX Series only.
- To indicate Type 4 / IP66 option, add suffix "N4" after size (catalog number).
- Where reference is made to Class I and Class II hazardous locations, the equipment is suitable for both Division 1 and Division 2 locations.
- Enclosures are pre-drilled for mounting panel and hinge kit unless otherwise specified.

#Lid Lifter Cover Assist standard on all XCE enclosures 18 x 24 and higher  
 \*\*ATEX approval but no Domestic UL & cUL approvals  
 \*\*\*This unit has limited approval dependent on number of entries  
 Some XJF Series enclosures do not have UL approval - consult factory.

EXPLOSIONPROOF  
 XCE/XJF Enclosures

## Customer Design Sheets

### Cover Layout



DIMENSION ALL MODIFICATIONS  
FROM CENTER LINES OF COVER

ATEX /IEC  
DEMKO U Cert.  
REF. DS483

UL  
UL APPROVED  
REF. DS361 & B301

CSA  
CSA APPROVED  
REF. DS327 & B301

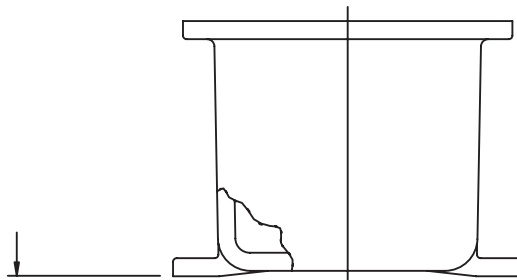
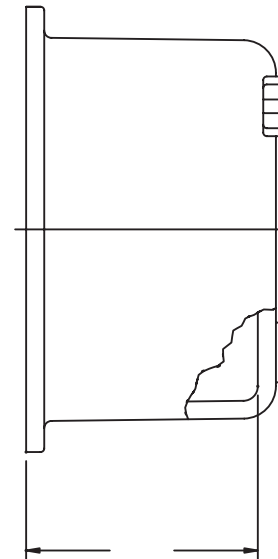
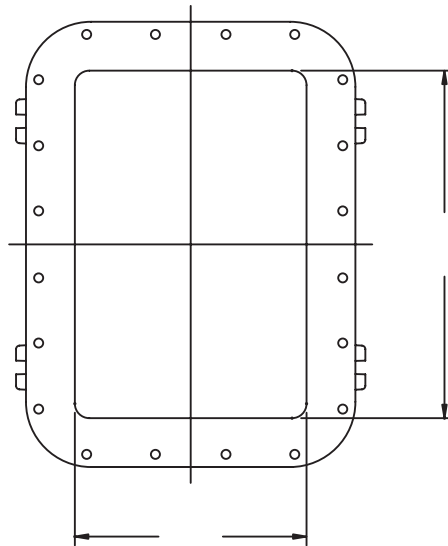
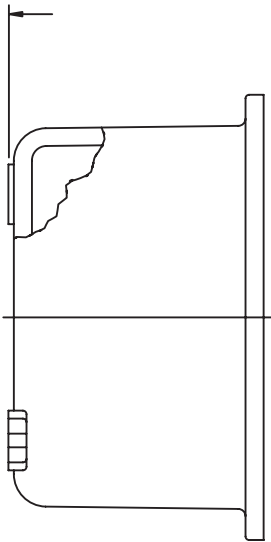
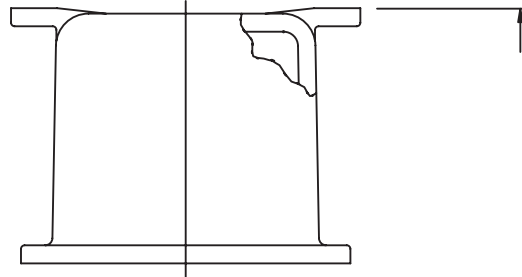
**HINGES**  
 LEFT HAND  
 RIGHT HAND  
 LONG SIDE  
 SHORT SIDE  
 NON REMOVABLE

NEMA 4/ IP66  
N4 GROOVE

CAT #: X \_\_\_\_\_

## Customer Design Sheets

### Box Layout



**ATEX (CENELEC)/IEC**

- DEMKO U Cert.  
REF.DS483

**UL**

- UL APPROVED  
REF.DS248 & B301

**CSA**

- CSA APPROVED  
REF. B301

**MTG. PANS**

- XSA PAN
- XSB PAN
- XSM PAN

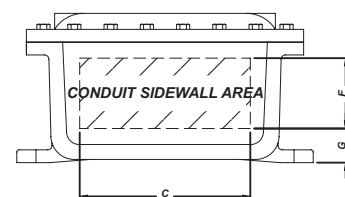
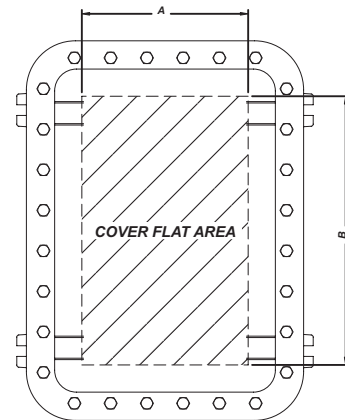
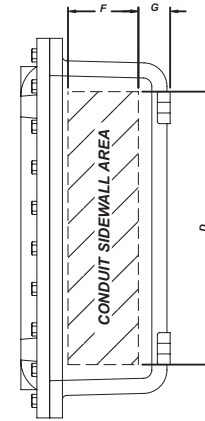
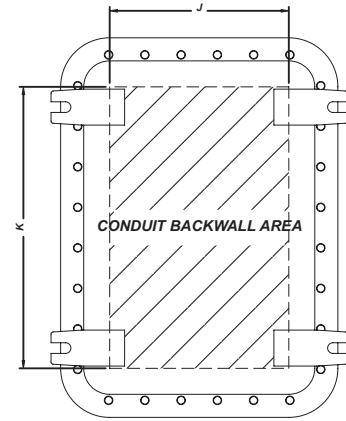
**HINGES**

- LEFT HAND
- RIGHT HAND
- LONG SIDE
- SHORT SIDE
- NON REMOVABLE

DIMENSION ALL MODIFICATIONS FROM CENTER LINES AND BOTTOM OF MOUNTING LUGS WHENEVER POSSIBLE.

## Cover & Sidewall Area

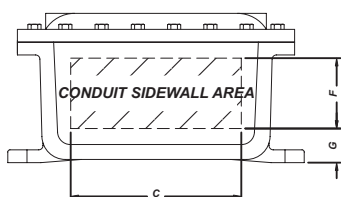
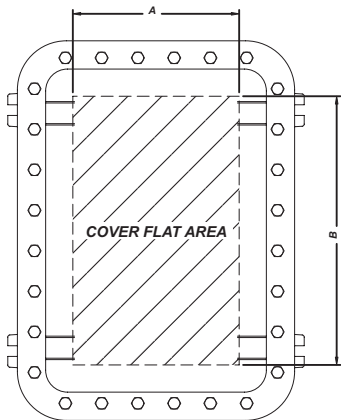
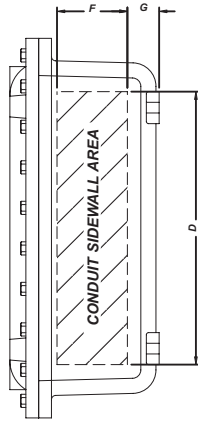
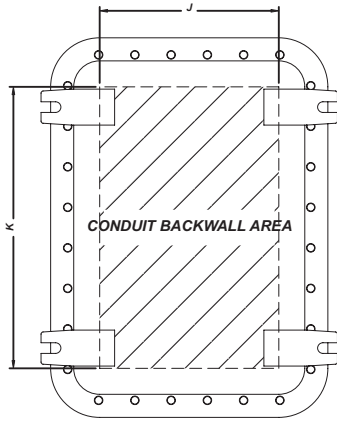
Enclosure Series	COVER FLAT		CONDUIT - SIDEWALL				BACKWALL	
	A	B	C	D	F	G	J	K
041604	2 1/8	14 1/8	2 11/16	14 11/16	2 7/8	1	3 1/8	15 1/8
060804	3 7/8	5 7/8	4 11/16	6 11/16	2 7/8	1	5 1/8	7 1/8
060805	3 7/8	5 7/8	4 5/8	6 5/8	3 7/8	1	5 1/16	7 1/16
060806	3 7/8	5 7/8	4 9/16	6 9/16	4 7/8	1	4 15/16	6 15/16
061105	3 7/8	8 7/8	4 5/8	9 5/8	3 3/8	1	5 1/8	10 1/8
061204	3 7/8	9 7/8	4 11/16	10 11/16	2 7/8	1	5 1/8	11 1/8
061206	3 7/8	9 7/8	4 9/16	10 9/16	4 9/16	1 5/16	4 7/16	10 7/16
061305	3 7/8	10 7/8	4 5/8	11 5/8	3 5/8	1	5 1/8	12 1/8
071004	4 7/8	7 7/8	5 5/8	8 5/8	2 1/2	1 3/8	5 5/8	8 5/8
071006	4 7/8	7 7/8	5 9/16	8 9/16	4 5/8	1 3/8	5 9/16	8 9/16
071805	5	16 1/4	5 7/16	16 11/16	3 1/2	1 3/8	5 7/16	16 11/16
080804	5 7/8	5 7/8	6 5/8	6 5/8	2 11/16	1 1/8	7 1/8	7 1/8
080806	5 7/8	5 7/8	6 9/16	6 9/16	4 11/16	1 1/8	7 1/16	7 1/16
080808	5 7/8	5 7/8	6 7/16	6 7/16	6 11/16	1 1/8	6 15/16	6 15/16
081004	5 7/8	7 7/8	6 5/8	8 5/8	2 1/2	1 3/8	6 5/8	8 5/8
081006	5 7/8	7 7/8	6 9/16	8 9/16	4 1/2	1 3/8	6 9/16	8 9/16
081008	5 7/8	7 7/8	6 7/16	8 7/16	6 1/2	1 3/8	6 7/16	8 7/16
081204	5 7/8	9 7/8	6 5/8	10 5/8	2 1/2	1 3/8	6 5/8	10 5/8
081206	5 7/8	9 7/8	6 9/16	10 9/16	4 1/2	1 3/8	6 9/16	10 9/16
081208	5 7/8	9 7/8	6 7/16	10 7/16	6 1/2	1 3/8	6 7/16	10 7/16
091105	6 7/8	8 7/8	7 5/16	9 5/16	3 3/8	1 9/16	7 5/16	9 5/16
101004	7 7/8	7 7/8	8 3/8	8 3/8	2 3/8	1 9/16	8 3/8	8 3/8
101006	7 7/8	7 7/8	8 5/16	8 5/16	4 3/8	1 9/16	8 5/16	8 5/16
101008	7 7/8	7 7/8	8 3/16	8 3/16	6 3/8	1 9/16	8 3/16	8 3/16
101206	7 3/4	9 3/4	8 1/4	10 1/4	4 5/8	1 9/16	8 1/4	10 1/4
101404	7 7/8	11 7/8	8 3/8	12 3/8	2 3/8	1 9/16	8 3/8	12 3/8
101406	7 7/8	11 7/8	8 5/16	12 5/16	4 3/8	1 9/16	8 5/16	12 5/16
101406	7 7/8	11 7/8	8 1/4	12 1/4	6 1/4	1 3/4	7 5/8	11 5/8
101408	7 7/8	11 7/8	8 1/16	12 1/16	6 1/4	1 3/4	7 5/8	11 5/8
121204	9 3/4	9 3/4	10	10	2 1/8	1 7/8	10	10
121206	9 3/4	9 3/4	9 13/16	9 13/16	4 1/8	1 7/8	9 13/16	9 13/16
121208	9 3/4	9 3/4	9 11/16	9 11/16	6 1/8	1 7/8	9 11/16	9 11/16
121804	9 3/4	15 3/4	10 1/8	16 1/8	2 1/8	1 7/8	10 1/8	16 1/8
121806	9 3/4	15 3/4	9 13/16	15 13/16	4 1/8	1 7/8	9 13/16	15 13/16
121808	9 3/4	15 3/4	9 11/16	15 11/16	6 1/8	1 7/8	9 11/16	15 11/16
122005	9 3/4	17 3/4	10 1/16	18 1/16	3 3/16	2	10 1/16	18 1/16
122404	9 5/8	21 5/8	10 1/8	22 1/8	2 1/8	2	10 1/8	22 1/8



EXPLOSIONPROOF  
XCE/XJF Enclosures



## Cover & Sidewall Area



Enclosure Series	COVER FLAT		CONDUIT - SIDEWALL				BACKWALL	
	A	B	C	D	F	G	J	K
122408	9 5/8	21 5/8	9 15/16	21 15/16	6 1/8	2	9 15/16	21 15/16
122410	9 5/8	21 5/8	9 13/16	21 13/16	8 1/8	2	9 13/16	21 13/16
123006	9 5/8	27 7/8	10 1/16	28 1/16	4	2 5/8	10 1/16	28 1/16
123604	9 5/8	33 7/8	10 1/8	34 1/8	2	2 3/8	10 1/8	34 1/8
123606	9 5/8	33 7/8	10 1/16	34 1/16	4	2 3/8	10 1/16	34 1/16
123608	9 5/8	33 7/8	9 15/16	33 15/16	6	2 3/8	9 15/16	33 15/16
124608	9 5/8	42 1/4	9 7/16	43 7/16	5 5/8	2 11/16	9 3/16	43 3/16
141404	11	11	12 1/8	12 1/18	1 3/4	2 1/8	11 5/8	11 5/8
141406	11	11	12 1/16	12 1/16	3 3/4	2 1/8	11 9/16	11 9/16
141408	11	11	11 15/16	11 15/16	5 3/4	2 1/8	11 7/16	11 7/16
142806	11	25	11 5/8	25 5/8	4	2	11 5/8	25 5/8
161604	12 1/2	12 1/2	14 1/8	14 1/8	2	2 1/16	14 1/8	14 1/8
161606	12 1/2	12 1/2	14 1/16	14 1/16	4	2 1/16	14 1/16	14 1/16
161608	12 1/2	12 1/2	13 15/16	13 15/16	6	2 1/16	13 15/16	13 15/16
162406	12 1/2	20 1/2	13 1/2	21 1/2	3 7/8	2 5/16	13 1/2	21 1/2
162408	12 1/2	20 1/2	13 3/8	21 3/8	5 7/8	2 5/16	13 3/8	21 3/8
162410	12 1/2	20 1/2	13 1/4	21 1/4	7 7/8	2 5/16	13 1/4	21 1/4
162806	13 1/4	25 1/4	14 1/16	26 1/16	3 11/16	2 3/16	14 1/16	26 1/16
163010	13 7/8	27 7/8	14 1/2	28 1/2	8 1/4	2 1/8	13 1/2	27 1/2
163406	13 3/8	31 3/8	14 1/16	32 1/16	3 15/16	2 5/16	14 1/16	32 1/16
164610	12 1/2	42 1/4	13 7/8	43 7/8	7 7/8	2 7/16	13 7/8	43 7/8
181804	14 1/4	14 1/4	16 3/16	16 3/16	1 7/8	2 5/16	16 3/16	16 3/16
181806	14 1/4	14 1/4	16 1/16	16 1/16	3 7/8	2 5/16	16 1/16	16 1/16
181808	14 1/4	14 1/4	15 15/16	15 15/16	5 7/8	2 5/16	15 15/16	15 15/16
182406	14 1/4	20 1/4	15 7/16	21 7/16	3 7/8	2 1/2	15 7/16	21 7/16
182408	14 1/4	20 1/4	15 3/8	21 3/8	5 7/8	2 1/2	15 3/8	21 3/8
182410	14 1/4	20 1/4	15 1/4	21 1/4	7 7/8	2 1/2	15 1/4	21 1/4
183008	14 1/4	26 1/4	15 3/8	27 3/8	5 7/8	2 1/2	15 3/8	27 3/8
183608	14 1/4	32 1/4	15 3/8	33 3/8	5 7/8	2 1/2	15 3/8	33 3/8
183610	14 1/4	32 1/4	15 1/4	33 1/4	7 7/8	2 1/2	15 1/4	33 1/4
203606	16 3/8	32 3/8	17 9/16	33 9/16	3 7/8	2 7/16	17 1/2	33 3/8
203612	16 3/8	32 3/8	17 9/16	33 9/16	3 7/8	2 7/16	17 1/2	33 3/8
204806	16 3/8	44 3/8	17 3/8	45 3/8	3 7/8	2 7/16	17 1/2	45 3/8
204812	16 3/8	44 3/8	17 3/8	45 3/8	3 7/8	2 7/16	17 1/2	45 3/8
242408	20 1/4	20 1/4	20 7/8	20 7/8	5 5/8	2 9/16	20 7/8	20 7/8
242410	20 1/4	20 1/4	20 3/4	20 3/4	7 5/8	2 9/16	20 3/4	20 3/4
243008	20 1/4	26 1/4	20 5/8	26 5/8	5 7/8	2 7/16	21 3/8	27 3/8
243608	20 1/4	32 1/4	21 3/16	33 3/16	5 7/8	2 1/2	21 15/16	33 15/16
243610	20 1/4	32 1/4	21 1/8	33 1/8	7 7/8	2 3/4	20 7/8	32 7/8
323612	28 3/4	32 3/4	30	34	3 3/8	2 3/4	28 7/8	32 7/8

## Minimum Spacing for Operators in Covers

Catalog #	STANDARD OPERATORS				MINIATURE OPERATORS				COVER WALL
	Max #	Max Rows	Max Per Row	Spacing CL to CL	Max #	Max Rows	Max Per Row	Spacing CL to CL	Thickness
XCE041604	5	5	1	2 ½	13	13	1	1	½
XCE060804	2	2	1	2 ½	8	4	2	1	½
XCE060805	2	2	1	2 ½	8	4	2	1	½
XCE060806	2	2	1	2 ½	8	4	2	1	½
XCE061105	3	3	1	2 ½	14	7	2	1	½
XCE061204	4	4	1	2 ½	16	8	2	1	⅝
XCE061206	4	4	1	2 ½	16	8	2	1	⅝
XCE061305	4	4	1	2 ½	18	9	2	1	½
XCE071004	6	3	2	2 ½	18	6	3	1	⅝
XCE071006	6	3	2	2 ½	18	6	3	1	⅝
XCE071805	12	6	2	2 ½	45	15	3	1	⅝
XCE080804	4	2	2	2 ½	16	4	4	1	1 ¼
XCE080806	4	2	2	2 ½	16	4	4	1	1 ¼
XCE080808	4	2	2	2 ½	16	4	4	1	1 ¼
XCE081004	6	3	2	2 ½	24	6	4	1	1 ¼
XCE081006	6	3	2	2 ½	24	6	4	1	1 ¼
XCE081008	6	3	2	2 ½	24	6	4	1	1 ¼
XCE081204	8	4	2	2 ½	32	8	4	1	1 ¼
XCE081206	8	4	2	2 ½	32	8	4	1	1 ¼
XCE081208	8	4	2	2 ½	32	8	4	1	1 ¼
XCE091105	6	3	2	2 ½	35	7	5	1	1 ¼
XCE101004	9	3	3	2 ½	36	6	6	1	1 ¼
XCE101006	9	3	3	2 ½	36	6	6	1	1 ¼
XCE101008	9	3	3	2 ½	36	6	6	1	1 ¼
XCE101206	12	4	3	2 ½	48	8	6	1	¾
XCE101406	12	4	3	2 ½	50	10	6	1	¾
XCE101408	12	4	3	2 ½	50	10	6	1	¾
XCE101410	12	4	3	2 ½	50	10	6	1	¾
XCE121204	9	3	3	3	50	8	8	1	⅞
XCE121206	9	3	3	3	50	8	8	1	⅞
XCE121208	9	3	3	3	50	8	8	1	⅞
XCE121804	15	5	3	3	50	14	8	1	1 ⅝
XCE121806	15	5	3	3	50	14	8	1	1 ⅝
XCE121808	15	5	3	3	50	14	8	1	1 ⅝
XCE122005	18	6	3	3	50	16	8	1	1 ⅝
XCE122404	21	7	3	3	50	20	8	1	1 ⅝
XCE122406	21	7	3	3	50	20	8	1	1 ⅝

**NOTE** For closer spacing consult factory for details. Hydro test may be necessary for closer hole spacing.

## Minimum Spacing for Operators in Covers

Catalog #	STANDARD OPERATORS				MINIATURE OPERATORS				COVER
	Max #	Max Rows	Max Per Row	Spacing CL to CL	Max #	Max Rows	Max Per Row	Spacing CL to CL	Thickness
XCE122408	21	7	3	3	50	20	8	1	1 ½
XCE122410	21	7	3	3	50	20	8	1	1 ½
XCE123006	27	9	3	3	50	26	8	1	1 ¾
XCE123604	33	11	3	3	50	32	8	1	1 ¾
XCE123606	33	11	3	3	50	32	8	1	1 ¾
XCE123608	33	11	3	3	50	32	8	1	1 ¾
XCE124608	42	14	3	3	50	41	8	1	1 ¼
XCE141404	16	4	4	3	50	10	10	1	¾
XCE141406	16	4	4	3	50	10	10	1	¾
XCE141408	16	4	4	3	50	10	10	1	¾
XCE142210	24	6	4	3	50	18	10	1	1 ½
XCE142213	24	6	4	3	50	18	10	1	1 ½
XCE142806	32	8	4	3	50	24	10	1	1 ½
XCE161604	16	4	4	3 ½	50	11	11	1	¾
XCE161606	16	4	4	3 ½	50	11	11	1	¾
XCE161608	16	4	4	3 ½	50	11	1	1	¾
XCE162406	24	6	4	3 ½	50	19	11	1	¾
XCE162408	24	6	4	3 ½	50	19	11	1	¾
XCE162410	24	6	4	3 ½	50	19	11	1	¾
XCE162806	28	7	4	3 ½	50	24	11	1	1 ¼
XCE163010	32	8	4	3 ½	50	24	11	1	1 ¼
XCE163406	36	9	4	3 ½	50	30	11	1	1 ¼
XCE164610	48	12	4	3 ½	50	41	11	1	1
XCE181804	36	6	6	2 ½	50	13	13	1	1
XCE181806	36	6	6	2 ½	50	13	13	1	1
XCE181808	36	6	6	2 ½	50	13	13	1	1
XCE182406	24	6	4	3 ½	50	19	13	1	1 ½
XCE182408	24	6	4	3 ½	50	19	13	1	1 ½
XCE182410	24	6	4	3 ½	50	19	13	1	1 ½
XCE183008	32	8	4	3 ½	50	25	13	1	1 ½
XCE183608	36	9	4	3 ½	50	31	13	1	1 ¾
XCE183610	36	9	4	3 ½	50	31	13	1	1 ¾
XCE203606*	45	9	5	3 ½	50	31	15	1	1 ¾
XCE203612*	45	9	5	3 ½	50	31	15	1	1 ¾
XCE204806*	65	13	5	3 ½	50	43	15	1	1
XCE204812*	65	13	5	3 ½	50	43	15	1	1
XCE242408	36	6	6	3 ½	50	19	19	1	1 ½
XCE242410	36	6	6	3 ½	50	19	19	1	1 ½
XCE243008	42	7	6	3 ½	50	25	19	1	1 ¾
XCE243608	54	9	6	3 ½	50	31	19	1	1 ¾
XCE243610	54	9	6	3 ½	50	31	19	1	1 ¾
XCE323612**	72	9	8	3 ½	50	31	27	1	1 ¾

**NOTE** For closer spacing consult factory for details. Hydro test may be necessary for closer hole spacing.

\* ATEX approval but no Domestic UL & cUL approvals

\*\* Consult factory

# Conduit Drilling and Tapping Guidelines

When drilling & tapping enclosures for conduit, proper installation requires compliance with the following:

1. Must be tapped with at least 5 full NPT threads in enclosure back or sides only; min. ½" conduit size for XJF and XCE series.
2. Depth of NPT holes must be plus ½ turn min. to plus 2 turns max. past standard NPT plug gage notch.
3. Inner end of conduit openings shall be smooth and well-rounded.

**TABLE I**

THREAD SIZE OF CONDUIT	MINIMUM WALL THICKNESS AT CONDUIT ENTRANCE EXCLUDING XCEX
Inches (NPT)	Explosionproof
½ - ¾	⅜ inch
1 - 2	7/16 inch
2 ½ - 5	⅝ inch

**TABLE II**

Conduit size, inches (NPT) / metric	½ / m16	¾ / m16	1 / m25	1¼ / m32	1½ / m40	2 / m56	2 ½ / m 63	3 / m75	3 ½	4	5
Minimum Distance from conduit CL to inside corner or back of box	1 ⅝	1 7/16	1 1/16	1 ¾	1 7/8	2 ½	2 ¾	2 11/16	2 15/16	3 ¼	3 7/8
Approximate diameter of union	1 7/8	1 7/8	2 1/16	2 7/8	3 ¼	3 7/8	4 7/8	5 ½	6	6 ½	7 ½

**TABLE III**

SIZE	5	4	3 ½	3	2 ½	2	1 ½	1 ¼	1	¾	½
½ / m16	4 ½	3 ⅝	3 ⅝	3	2 ⅝	2 ⅝	2	1 7/8	1 ¾	1 ⅝	1 ½
¾ / m20	4 ¾	3 ¾	3 ½	3 ⅝	2 ¾	2 ½	2 ½	2	1 7/8	1 ¾	
1 / m25	4 7/8	4	3 ⅝	3 ¼	3	2 ⅝	2 ⅝	2 ¼	2		
1 ¼ / m32	5 ⅝	4 ⅝	3 7/8	3 ½	3 ⅝	2 7/8	2 ½	2 ⅝			
1 ½ / m40	5 ½	4 ¼	4	3 ⅝	3 ¼	3	2 ⅝				
2 / m50	5 ¾	4 ⅝	4 ¼	3 7/8	3 ⅝	3 ¼					
2 ½ / m63	6	4 7/8	4 ⅝	4 ¼	3 7/8						
3 / m75	6 ¼	5 ⅝	5	4 ⅝							
3 ½	6 ½	5 ⅝	5 ¼								
4	6 ¾	5 7/8									
5	7 ¼										

- NOTES**
1. This information is compiled from data which we believe is reliable and is given in good faith. Since the methods of application and conditions under which our products are used are beyond our control, we are not able to guarantee the application and/or use of same. The user assumes all risks and liability in connection with the application and use of our products.
  2. Dimensions are in inches.
  3. Metric threads available from factory for most applications – Consult Factory.
  4. Consult Factory for special spacing arrangements. Hydro test may be required.

# Auxiliary Device Drilling & Tapping Guidelines

## Spacing For Auxiliary Devices Installed in Box Walls Of Control Panel Enclosures Used In Hazardous Locations.

When using an Auxiliary Device in the box wall of an enclosure used in hazardous locations, proper installation requires compliance with the following:

1. A minimum of (5) thread engagement, class 2 fit, required for group C & D applications.  
 A minimum of (7) thread engagement, class 2 fit, required for group B applications.
2. Table I shows minimum box wall thickness for Auxiliary Device threads.

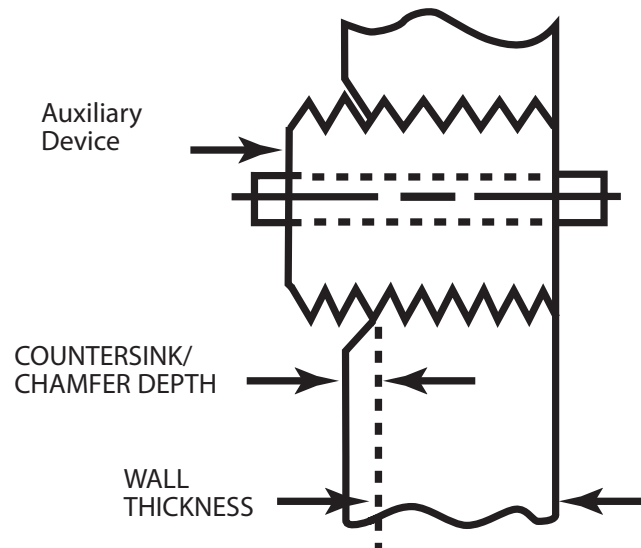
**TABLE I**

REQUIRED MINIMUM BOX WALL THICKNESS				
Thread Size (In.)	Group C & D min. (5) thread engagement	Group B min. (7) thread engagement	Typical Auxiliary Devices	Drill Dia.
½ -14 NPSM	¾ Inch	½ Inch		.747/.759
¾ -14 NPSM	¾ Inch	½ Inch	XBO, XHPB, XHSS, Standard Operators	.958/.970
1 -11 ½ NPSM	7/16 Inch	5/8 Inch	XCBH Large Handle Assembly	1.201/1.211
¾ - 18 NPSM	5/32 Inch	13/32 Inch	XCBH Small Handle Assembly	.603/.612
¾ - 16 UNC	¾ Inch	7/16 Inch	XMOB, XMOSS, Mini Operators	5/16

3. If Auxiliary Device contains undercut in engaging threaded section, the minimum wall thickness shown in Table I must increase to maintain the minimum required thread engagement. (Fig. A)

(continued next page)

**FIG. A**  
SEE NOTE 3



## Auxiliary Device Drilling & Tapping Guidelines

### Spacing For Auxiliary Devices Installed in Box Walls Of Control Panel Enclosures Used In Hazardous Locations.

When using an Auxiliary Device in the box wall of an enclosure used in hazardous locations, proper installation requires compliance with the following (continued from previous page):

- Table II provides the minimum distance an Auxiliary Device center can be placed from inside corner or back of box.

**TABLE II**

	¾ - 16 UNC	¾ NPSM	½ NPSM	¾ NPSM	1 NPSM
Minimum Distance from auxiliary Device CL to corner or back of box	1 ½	1 ¾	1 ¾	1 ¾	2

- Table III shows minimum spacing between conduit and Auxiliary Device entrances.

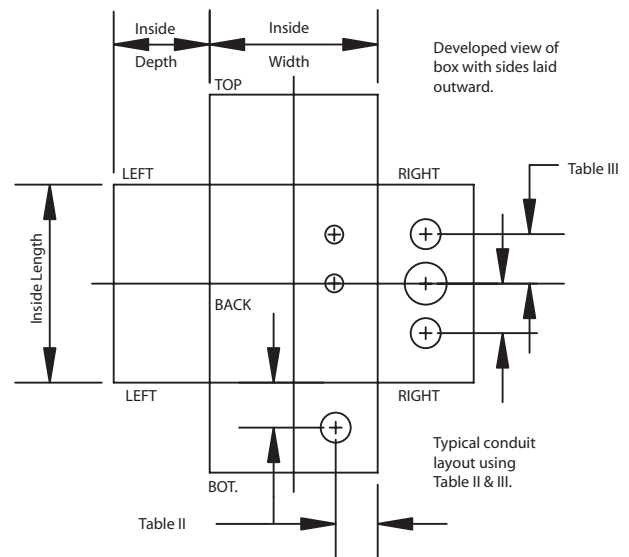
**TABLE III**

AUXILIARY DEVICE THREAD (In.)	5	4	3-½	3	2-½	2	1-½	1-¼	1	¾	½
¾	4 ½	3 ¾	3 ¾	3	2 ¾	2 ¾	2	1 ¾	1 ¾	1 ¾	1 ½
½	4 ¾	3 ¾	3 ½	3 ¾	2 ¾	2 ½	2 ¼	2 ½	2	1 ¾	1 ¾
¾	4 ¾	4	3 ¾	3 ¼	2 ¾	2 ¾	2 ¾	2 ¼	2 ½	2	1 ¾
1	5	4 ¼	3 ¾	3 ½	3	2 ¾	2 ½	2 ¾	2 ¼	2 ½	2

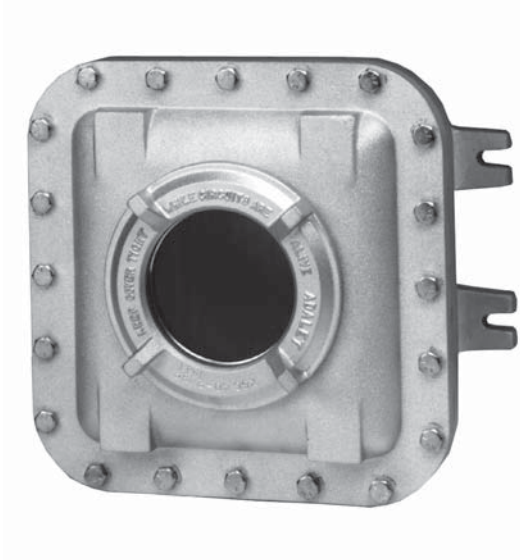
- Table IV shows minimum spacing between auxiliary device entrances.  
NOTE: Increase distance between devices as required to maintain minimum through air spacing of contacts required by electrical codes.
- Double all distances in Table III and IV for holes located in back wall.

**TABLE IV**

MIN. SPACING BETWEEN AUX. DEVICE OF VARYING THREAD SIZES (INCHES)				
	¾	½	¾	1
¾	1 ½	1 ½	1 ½	2 ½
½	1 ½	2	2	2 ½
¾	1 ½	2	2	3
1	2 ½	2 ½	3	3 ½



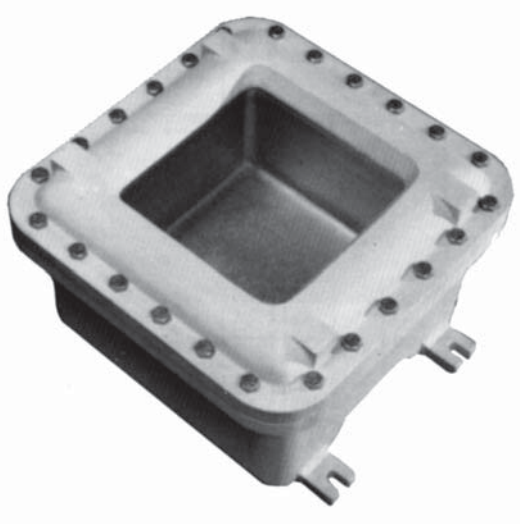
## Glass Windows



## CIRCULAR WINDOW

Circular Window	Window Viewing Area Diameter	Overall Window Cover Diameter	Min Enclosure Inside Width / Length	Thread
XGC 10	1 1/8	3	8	2 1/2-16
XGC 20	1 5/16	4 1/8	9	3 3/8-12
XGC 30	3	5 3/16	9	4 3/4 - 12
XGC 40	4	6 3/8	9	5 1/2 - 12
XGC 52	5 1/4	7 7/8	10	7 1/8 - 12
XGC 66	6 1/16	10 3/8	16	9 1/8 - 12
XGC 80	8	12 1/8	18	10 7/8 - 8

- NOTES**
1. All dimensions are in inches.
  2. Glass window catalog number includes XCE cover machining and installation.
  3. For TYPE 4/IP66 option add suffix "N4".
  4. To order glass windows for field installations, add suffix SLF to XGC catalog no.
  5. Consult factory for closer spacing requirements, multiple windows or combinations of operators and windows.



## STANDARD RECTANGULAR WINDOW

Rectangular Window	Window Viewing Area Diameter	Min Enclosure Inside Width	Min Enclosure Inside Length
XGW 0303	3 X 3	8	8
XGW 0305	3 X 5	8	10
XGW 0307	3 X 7	8	12
XGW 0505	5 X 5	10	10
XGW 0509	5 X 9	10	14
XGW 0707	7 X 7	12	12
XGW 0713	7 X 13	12	18
XGW 0909	9 X 9	14	14
XGW 1111	11 X 11	16	16
XGW 1313	13 X 13	18	18

- NOTES**
1. All dimensions are in inches
  2. Glass window catalog number includes installation and pattern modifications.
  3. For TYPE 4 option add suffix "N4".
  4. Consult factory for special viewing area requirement, closer spacing and to combine windows with other window sizes or operators.
  5. Windows can be ordered in size between 3" and 13" – Consult Factory.

# XCE SERIES & XJF

## Stainless Steel Explosionproof and Flameproof Control Enclosures

### STANDARD FEATURES

- 5 standard sizes available
- Flat plate cover design
- Corrosion resistant, cast stainless steel 316L
- Stainless steel hinge kit
- Pre-drilled for mounting panel (mounting panel optional)
- Type 4 watertight Nitrile gasket
- Stainless steel cover bolts
- Internal / external grounding screws
- Removable lifting eye bolts
- Lid-lifter cover alignment device on covers > 100 lbs.
- Cast-on mounting lugs / feet

### DESIGN OPTIONS

- Stainless steel cover bolts for Type 4X additional corrosion protection
- Conduit (NPT & metric) and device (NPSM) drilling & tapping
- Auxiliary devices such as breather / drains and flame arrestors
- Custom machining - milling, counter-boring, spot-facing, blind drilled holes, entries, chamfers

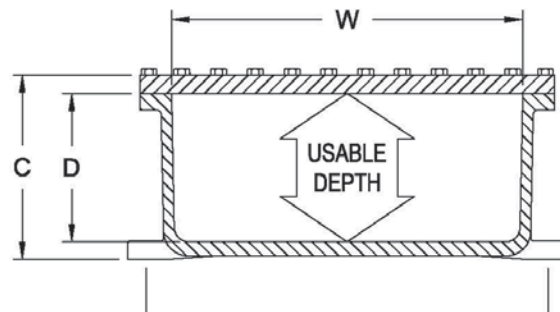
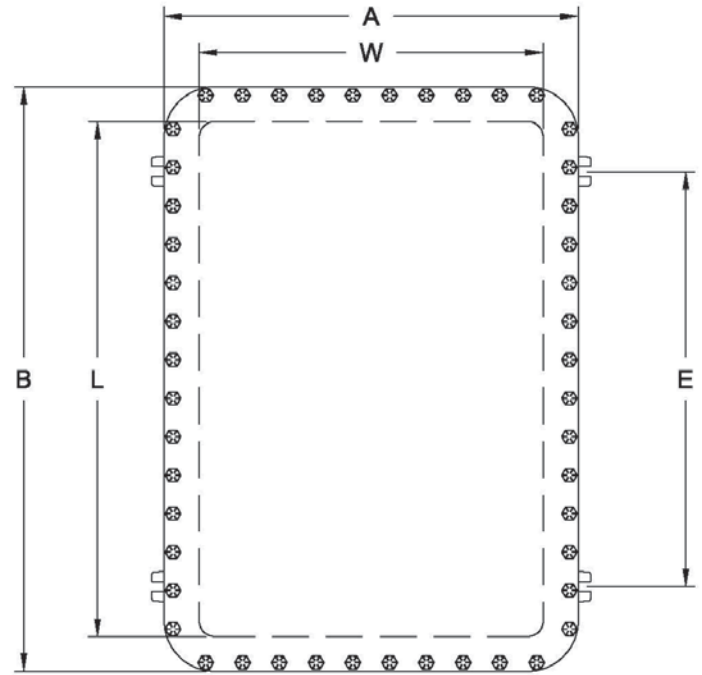
### MATERIAL

- Enclosure - stainless steel 316L
- Cover bolts - stainless steel 316L
- Hinge kits - stainless steel 316L

### CERTIFICATIONS

Class I, Division 1 Group B, C & D  
 Class II, Groups E, F & G  
 Class III  
 Class I, Zone 1, AEx d IIB  
 Type 4  
 IECEx Ex d IIB Gb  
 IECEx Ex DA21 IP66

0539 II 2 G Ex d IIB  
 0539 II 2 D ExtD A21 IP66



XCESX Catalog #	Usable Depth	Inside Nom. Dimensions			Overall Dimensions			Mounting Lug CL to CL		Mtg. Bol Size	Ship Weight	Pan Catalog #			Nom. Dimensions		Steel Pan Weight	Hinge Cat #
		W	L	D	A	B	C	E	F			Steel	Alum.	Phen	W	H		
101408	8	10	14	8	13-9/16	17-9/16	9-7/8	10-7/8	13	7/16	195	XSM1014	XSA1014	XSB1014	8-7/8	12-7/8	3-1/2	XHBK-2
121208	8	12	12	8	16-1/4	16-1/4	9-7/8	8-5/8	15-3/4	5/8	210	XSM1212	XSA1212	XSB1212	10-7/8	10-7/8	3-3/4	XHCK-2
122410	10	12	24	10	16-1/4	28-1/4	11-3/4	18-3/8	15-3/4	5/8	380	XSM1224	XSA1224	XSB1224	11	23	8	XHCK-2
242410	10	24	24	10	28-7/8	28-7/8	12-3/8	18.375	28	3/4	735	XSM2424	XSA2424	XSB2424	22	22	15-1/4	XHFK-2
243610	10	36	10	4 1/2	28-7/8	40-7/8	12-3/8	29	28	3/4	985	XSM2436	XSA2436	XSB2436	34	22	23-1/2	XHFK-3



# Flameproof High Voltage Enclosures

## STANDARD FEATURES

- 16 (1x1) and 10 (2x2) sizes available
- Corrosion resistant, copper free aluminum
- Hinged cover
- Type 4 watertight Nitrile gasket
- Custom steel mounting panel
- Set of three porcelain standoffs and hardware (1 x1 connection only)
- Set of three porcelain bus support insulators and hardware (2 x 2 connection only)
- High voltage cover sign
- High strength steel cover bolts (zinc plated and coated)
- Internal and external ground lugs
- Removable lifting eye bolts (18 x 24 and larger)
- Lid-lifter cover alignment device (18 x 24 and larger)
- Cast-on mounting lugs / feet
- Tumbleblast, natural aluminum finish

## DESIGN OPTIONS

- Stainless steel cover bolts for Type 4X additional corrosion protection
- Conduit (NPT & metric) and device (NPSM) drilling & tapping
- Auxiliary devices such as breather / drains
- Custom machining - milling, counter-boring, spot-facing, drilled entries, chamfers
- Custom cast-on logos
- Powder and epoxy coating for additional corrosion resistance
- Special mounting provisions

## MATERIAL

- Enclosure - copper free aluminum (3/10 of 1%)
- Cover bolts - steel, zinc plated and coated
- Hinge kits - copper free aluminum with stainless steel 316L hardware
- Mounting panel, galvanized steel

## CERTIFICATIONS

Class I, Division 1, Groups B, C & D  
Class II, Division I, Groups EFG

Class III  
Type 4

Class I, Zone 1, AEx d IIB  
T6 or T5:  $-20^{\circ}\leq Ta < 55^{\circ}\text{C}$

IECEX UL 09.0031X

Ex d IIB T6:  $-20^{\circ}\text{C}\leq Ta\leq +55^{\circ}\text{C}$

Ex tD A21 IP66 T73 °C

DEMKO 01 ATEX 0128064  
Ex d IIB T6 or T5:  $-20^{\circ}\leq Ta\leq 55^{\circ}\text{C}$

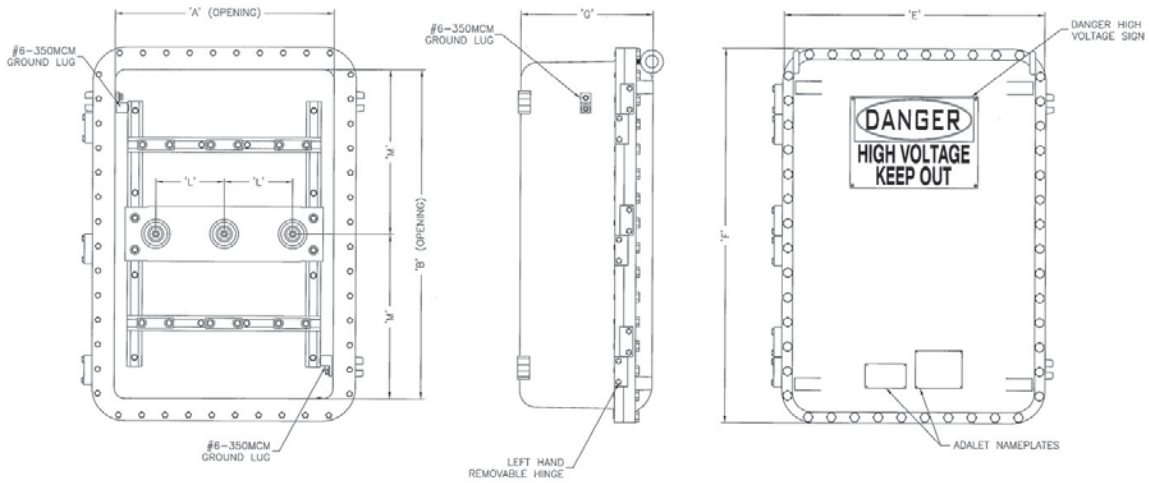
0539 Ⓢ II 2 G Ex d IIB

0539 Ⓢ II 2 D ExtD A21 IP66



# XHVX Series

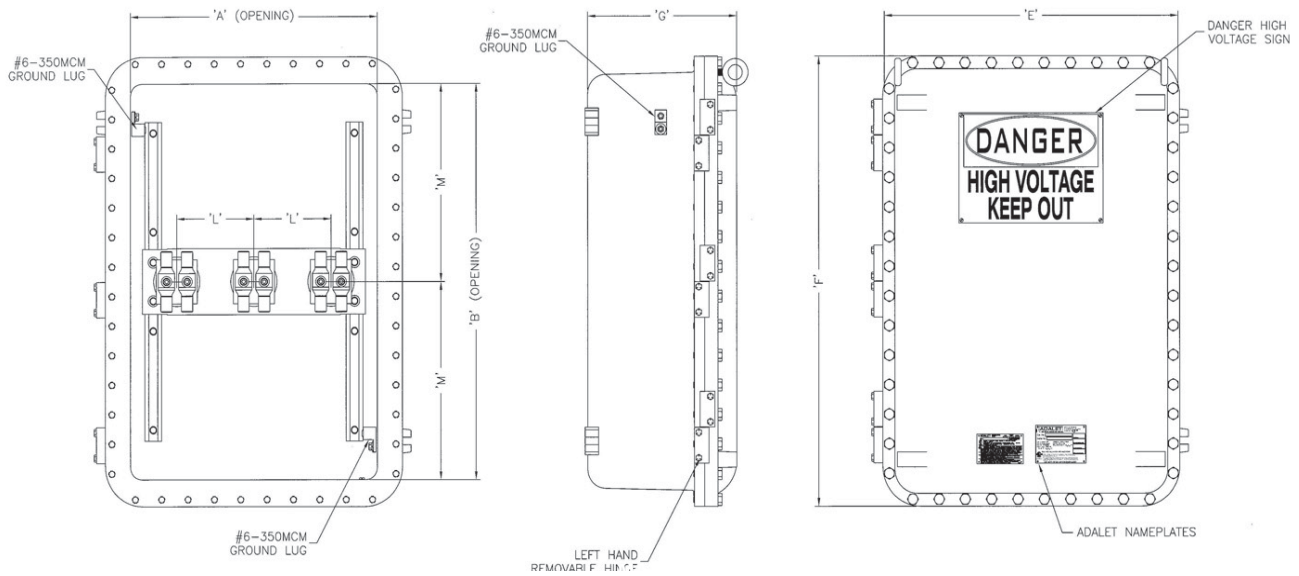
## 1 x 1 Connection Series



ENCLOSURE	H	W	D	CONDUCTOR SIZE		VOLTAGE	AMPERAGE
				AWG / MCM	mm <sup>2</sup>	MAX	MAX
XHVX-121208	12.00	12.00	8.00	2/10	70	2.5kV	160
XHVX-161608	16.00	16.00	8.00	3/10	95	6.6kV	200
XHVX-162408	16.00	24.00	8.00	350	185	6.6kV	315
XHVX-181808	18.00	18.00	8.00	4/10	120	6.6kV	225
XHVX-182408	18.00	24.00	8.00	350	185	6.6kV	315
XHVX-183008	18.00	30.00	8.00	350	185	6.6kV	315
XHVX-183608	18.00	36.00	8.00	350	185	6.6kV	315
XHVX-242408	24.00	24.00	8.00	350	185	6.6kV	315
XHVX-243008	24.00	30.00	8.00	350	185	6.6kV	315
XHVX-243608	24.00	36.00	8.00	350	185	6.6kV	315
XHVX-162410	16.00	24.00	10.00	350	185	6.6kV	315
XHVX-164610	16.00	46.00	10.00	350	185	6.6kV	315
XHVX-182410	18.00	24.00	10.00	350	185	6.6kV	315
XHVX-183610	18.00	36.00	10.00	350	185	6.6kV	315
XHVX-242410	24.00	24.00	10.00	350	185	8kV	315
XHVX-243610	24.00	36.00	10.00	400	240	8kV	400

MIN CONDUCTOR SIZE		AMPERAGE
mm <sup>2</sup>	AWG/MCM	MAX
10	8	50
16	6	80
25	4	100
35	2	125
50	1/0	160
70	2/0	200
95	3/0	225
150	250	250
185	350	315
240	400	400

## 2 x 2 Connection Series



ENCLOSURE	H	W	D	MCM	mm <sup>2</sup>	AMPERAGE	
						Phase	Conductor
XHVX-182408	18.00	24.00	8.00	350	185	630	315
XHVX-183008	18.00	30.00	8.00	400	240	800	400
XHVX-183608	18.00	36.00	8.00	400	240	800	400
XHVX-182410	18.00	24.00	10.00	350	185	630	315
XHVX-183610	18.00	36.00	10.00	400	240	800	400
XHVX-242408	24.00	24.00	8.00	350	185	630	315
XHVX-243008	24.00	30.00	8.00	400	240	800	400
XHVX-243608	24.00	36.00	8.00	400	240	800	400
XHVX-242410	24.00	24.00	10.00	350	185	630	315
XHVX-243610	24.00	36.00	10.00	500	300	1,000	500

mm <sup>2</sup>	MIN CONDUCTOR SIZE		AMPERAGE
	AWG/MCM	MAX	
10	8	50	
16	6	80	
25	4	100	
35	2	125	
50	1/0	160	
70	2/0	200	
95	3/0	225	
150	250	250	
185	350	315	
240	400	400	
300	500	500	

EXPLOSIONPROOF XCE/XJF Enclosures

# XCPX SERIES

## XCPX Enclosure Series

The Adalet XCPX series ATEX Certified Control Panels are designed to provide a complete ATEX equipment certificate to final assemblies direct from ADALET without additional third party testing & approvals. Utilizing our ATEX Certified XCEX flameproof control enclosures, Adalet can fully populate our control enclosures with any CE approved device and provide the engineering services required to certify your final assembly as an ATEX control panel with a complete ATEX Equipment Certificate.

### STANDARD FEATURES

- 80 sizes available
- Corrosion resistant, copper free aluminum
- Turnkey engineering and panel population / assembly
- Drilled & tapped conduit entries per customer design specifications
- Pre-drilled hinge holes (hinge optional)
- Pre-drilled mounting panel bosses (mounting panel optional)
- Type 4 watertight Nitrile gasket
- High strength steel cover bolts (zinc plated and coated)
- Internal / external grounding screws
- Removable lifting eye bolts (18 x 24 and larger)
- Lid-lifter cover alignment device (18 x 24 and larger)
- Cast-on mounting lugs / feet
- Tumbast, natural aluminum finish

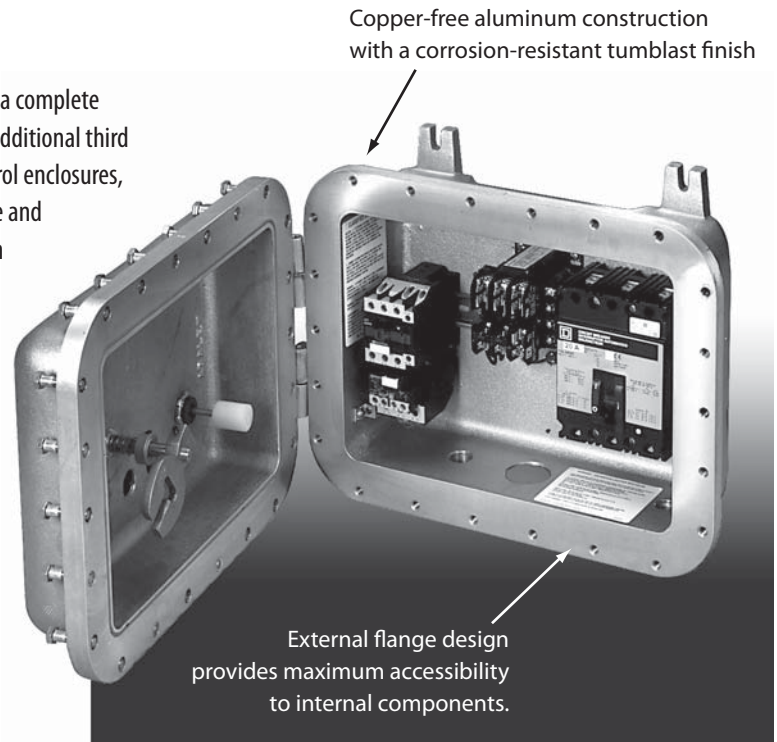
### DESIGN OPTIONS

- Stainless steel cover bolts for Type 4X additional corrosion protection
- Mounting panels - Available in galvanized steel (XSM), aluminum (XSA), or phenolic (XSB)
- Aluminum hinge kits with stainless steel hardware
- Operators and auxiliary devices such as breather / drains and flame arrestors
- Window kits - Round (up to 8" viewing diameter) or square / rectangle (up to 13" x 13")
- Custom machining - Milling, counter-boring, spot-facing, blind drilled holes, entries, chamfers
- Custom cast-on logos
- Powder and epoxy coating for additional corrosion resistance
- Special mounting provisions

### CONSTRUCTION MATERIALS

- Enclosure - Copper free aluminum (3/10 of 1%)
- Cover bolts - Steel, zinc plated and coated
- Hinge kits - Copper free aluminum with stainless steel hardware
- Mounting panel - Galvanized steel, aluminum or phenolic

\* Limitations on internal electrical components



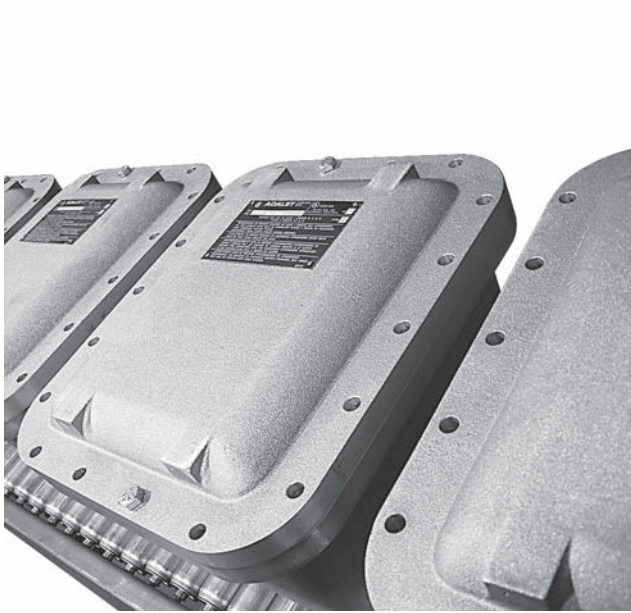
*Our Adalet sales engineers will offer you a detailed price quotation based on the specifications unique to your project and scope of services required. Please contact one of our ATEX control panel consultants to learn more about our services or to inquire about receiving a price quotation for your ATEX control panel requirements.*

**ADALET**  
A SCOTT FETZER COMPANY

### CERTIFICATIONS

Class I, Division 1 Group B\*, C\* & D  
 Class II, Groups E, F & G  
 Class III  
 Class I, Zone 1, AEx d IIB  
 Ex d IIB  
 Type 4  
 CE 0539 Ⓢ II 2 GD  
 Ex d IIB+H<sup>2</sup> T6  
 Ex d IIB+H<sup>2</sup> T5 (Tamb +60° C)  
 Ex tD A21 IP66 T100° C  
 Epsilon 07 ATEX 2196





## ATEX Flameproof Control Panel Equipment Certification

Utilizing our ATEX equipment certification, Adalet can now fully populate empty ATEX certified XCEX enclosures and provide CE certification to any and all applicable CE marking directives. This ATEX control panel certification allows Adalet to eliminate the requirement to re-submit enclosure assemblies to third party testing laboratories for final ATEX equipment certification saving customers considerable time and money.

The Adalet ATEX Control Panel Assembly certificate allows for the installation of control operators, motor control components, and all other CE marked components inside Adalet's complete line of ATEX certified empty XCEX IIB+H2 enclosures. Adalet also provides services for installation and wiring of all control components as well as complete engineering design and review, certification, and documentation requirements. Added charges are included for such items as ATEX inspection, hydro testing, component thermal review, declarations and documentation retention to name a few. Adalet will accept the customers existing specifications or offer our engineering services to assist with design details.

### ATEX Certification & Documentation

As part of the final ATEX control panel assembly, Adalet will provide all necessary certification and documentation required for your final ATEX equipment certification.

### Engineering Review, Design & Consultation Services

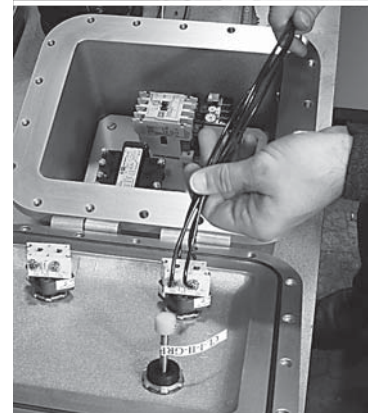
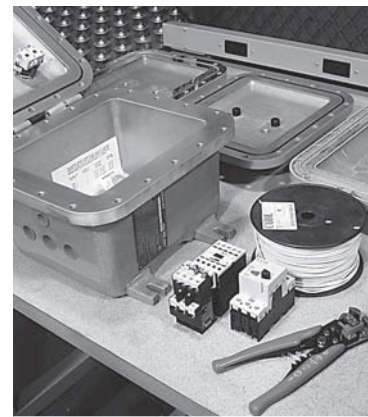
Adalet engineering services are available for those projects which are candidates for ATEX control panel certification. Using customer supplied specifications or Adalet design and engineering services, we will carefully review your requirements making certain your assembly meets or exceeds the minimum specifications for ATEX equipment certification.

### IIB +H2 Certification

Adalet XCEX empty enclosures are now certified for IIB+H2 for ATEX applications.

### Turnkey Solutions for Adalet ATEX Control Panel Assemblies

Adalet can provide a complete turnkey ATEX control panel package based on your design specifications. Our engineering team has the experience necessary to provide you with a complete ATEX control panel from start to finish.





# XIF SERIES

XIF: Junction Boxes

XIFX: Flameproof Junction Boxes

XIFC: Explosionproof Control Enclosures

XIFCX: Flameproof Control Enclosures

## DESIGN OPTIONS

### MOUNTING PANS Three Materials Available:

**Steel:** (XSM) Galvanized 12 gauge steel plate. The catalog number includes the steel mounting pan complete with ¼" high spacers and stainless steel mounting screws.

**Aluminum:** (XSA) Consult factory for availability.

**Phenolic:** (XSB) A special phenolic laminated material that has high mechanical and dielectric strength. It is excellent for mounting and wiring control equipment. The catalog number includes the phenolic board, ¾" thick, complete with ¼" high spacers and stainless steel mounting screws.

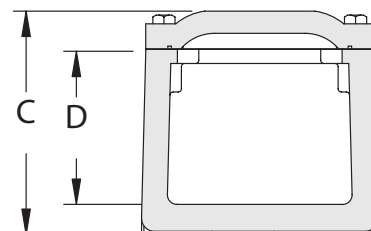
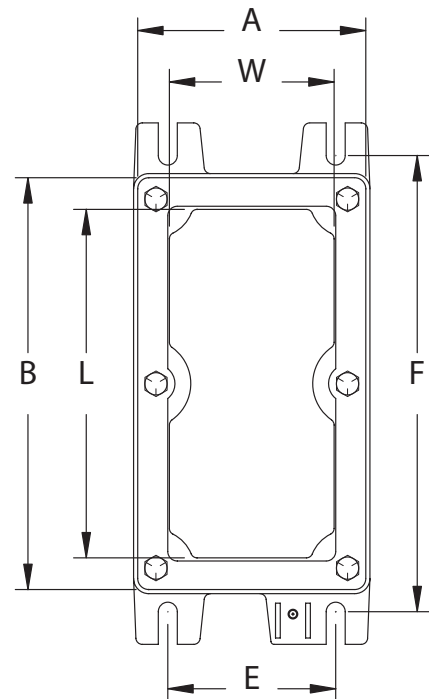
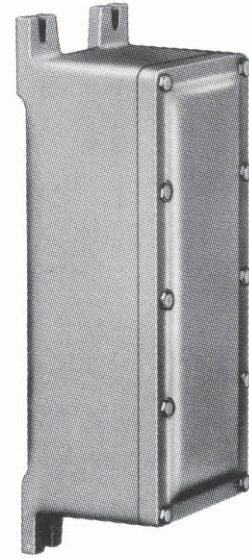
### AUXILIARY OPERATOR INSTALLATIONS

Available in XIFC and XIFCX covers

### EXTERNAL EARTHING DEVICE

Supplied on XIFX and XIFCX

Gasket for Type 4 applications  
available for XIF and XIFC



## CERTIFICATIONS

## XIF SERIES

**CERTIFICATIONS**

Class I, Division I, Groups C & D  
 Class II, Groups E,F,G  
 Type 4



LISTED 437S



## XIFX SERIES

**CERTIFICATIONS**

Class I, Division I, Groups C & D Ex d IIB  
 Class II, Groups E, F, G  
 Class III  
 Class I, Zone 1, AEx d IIB  
 Ex d IIB  
 IECEx Ex d IIB  
 IEC60529: IP 40  
 IECEx UL.08.0011U

Ex d IIB T6; T5: -20 < Ta < 55 C II 2GD  
 DEMKO 07 ATEX 0603868U



## XIFC SERIES

**CERTIFICATIONS**

Class I, Division I, Groups C & D  
 Class II, Groups E, F, G  
 Type 4



## XIFCX SERIES

**CERTIFICATIONS**

Class I, Division I, Groups C,D  
 Class II, Groups E, F, G  
 Class III  
 Class I, Zone 1, AEx d IIB  
 Ex d IIB T6 (T5 Tamb +55° C)  
 IECEx Ex d IIB T6 (T5 Tamb +55° C)  
 IECEx UL 08.0023X  
 IP40

0539 CE II 2 G Ex  
 DEMKO 09 ATEX 0816570X



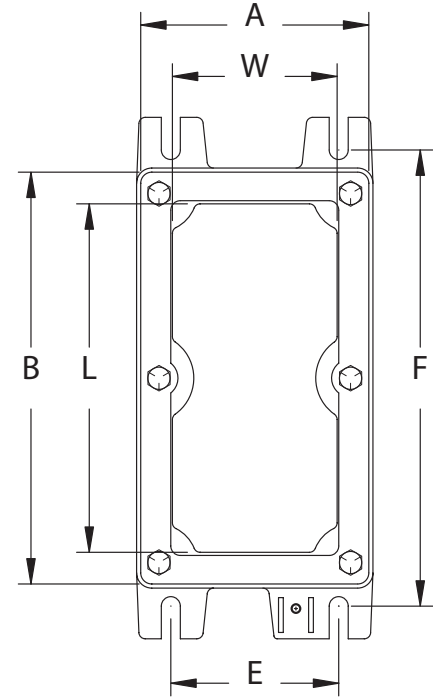
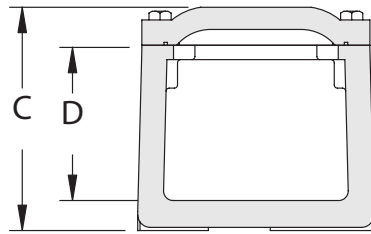
# XIF SERIES

XIF: Junction Boxes

XIFX: Flameproof Junction Boxes

XIFC: Explosionproof Control Enclosures

XIFCX: Flameproof Control Enclosures

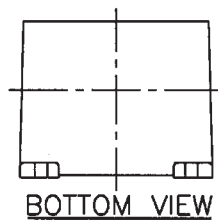
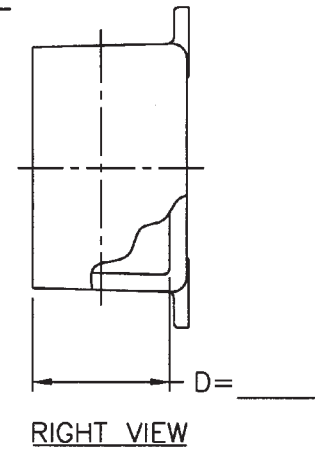
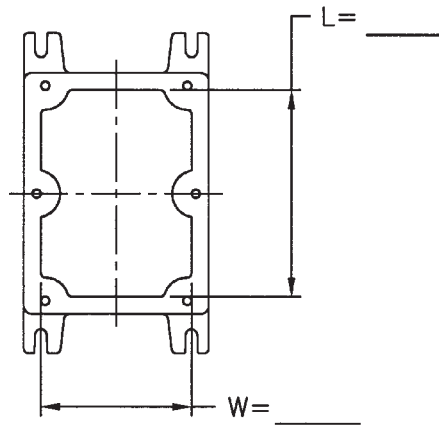
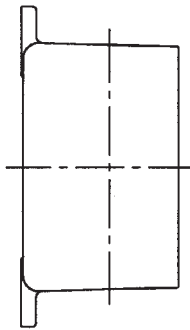
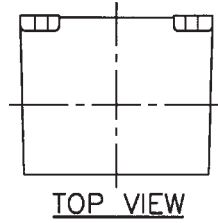


XIFC/XIFCX Catalog #	XIF/XIFX Catalog #	Inside Nom. Dimensions			Overall Dimensions			Mounting Lug CL to CL		Mtg. Bolt Size	Ship Weight	Pan Catalog #			Nom. Dimensions		Steel Pan Weight
		W	L	D	A	B	C	E	F			Steel	Alum.	Phen	W	L	
XIFC/X030303	XIF/X030303	3 3/16	3 3/16	3 3/16	4 1/2	4 1/2	4 3/16	3 1/4	5 1/2	3/16	5	XSM0303	XSA0303	XSB0303	3	3	1/4
XIFC/X030603	XIF/X030603	3 3/4	5 3/4	3	4 1/2	7 1/16	4 1/4	3 1/4	8	3/16	6 1/2	XSM0306	XSA0306	XSB0306	3	5 1/2	1/2
XIFC/X030703	XIF/X030703	3 3/4	6 7/8	3	4 1/2	8 1/8	4 3/16	3 3/16	9	3/16	7 1/2	XSM0307	XSA0307	XSB0307	3	6 1/2	1/2
XIFC/X030903	XIF/X030903	3 11/32	8 15/16	3	4 1/2	10 1/16	4 3/16	3 1/4	11	3/16	9 1/2	XSM0309	XSA0309	XSB0309	3	8 1/2	3/4
XIFC/X031103	XIF/X031103	3 3/4	10 15/16	3	4 1/2	12	4 3/16	3 1/4	13	3/16	11	XSM0311	XSA0311	XSB0311	3	10 1/2	1
XIFC/X031303	XIF/X031303	3 3/4	12 13/16	3	4 1/2	14 1/16	4 3/16	3 1/4	15	3/16	11 1/2	XSM0313	XSA0313	XSB0313	3	12 1/2	1 1/4
XIFC/X031503	XIF/X031503	3 3/4	14 3/4	3 1/16	4 1/2	16	4 3/16	3 1/4	17	3/16	13	XSM0315	XSA0315	XSB0315	3	14 1/2	1 1/2
XIFC/X031803	XIF/X031803	3 3/4	17 3/4	3	4 1/2	19	4 1/4	3 1/4	20	3/16	16	XSM0318	XSA0318	XSB0318	3	17 1/2	1 3/4
XIFC/X032403	XIF/X032403	3 3/4	23 3/16	3	4 1/2	25 1/16	4 3/16	3 1/4	26	3/16	21	XSM0324	XSA0324	XSB0324	3	23 1/2	2 1/4
XIFC/X033003	XIF/X033003	3 3/4	29 1/2	3	4 3/16	31 1/16	4 3/16	3 1/4	32 1/8	3/16	28	XSM0330	XSA0330	XSB0330	3	29	2 3/4
XIFC/X033603	XIF/X033603	3 3/4	35 7/16	3	4 1/2	37 1/4	4 3/8	3 1/4	38 1/8	3/16	33	XSM0336	XSA0336	XSB0336	3	35	3 1/4
XIFC/X040604	XIF/X040604	4 1/8	5 7/8	4	5 3/8	7	5 5/16	4 3/8	8 1/4	3/16	8 1/2	XSM0406	XSA0406	XSB0406	3 7/8	5 1/2	3/4
XIFC/X041204	XIF/X041204	4 1/4	11 13/16	4	5 1/2	13 3/8	5 5/16	4 3/8	14 1/4	3/16	15 1/2	XSM0412	XSA0412	XSB0412	3 7/8	11 1/2	1 1/2
XIFC/X060606	XIF/X060606	5 1/2	5 1/2	6	7	7	7 3/8	5 1/2	8 1/2	3/8	14	XSM 0606	XSA 0606	XSB 0606	5 1/2	5 1/2	1
XIFC/X060608	XIF/X060608	5 1/4	5 1/2	8	7	7	9 3/8	5 1/2	8 1/2	3/8	17 1/2	XSM 0606	XSA 0606	XSB 0606	5 1/2	5 1/2	1
XIFC/X061206	XIF/X061206	5 1/4	11 1/8	6	7 1/4	13 1/2	7 3/8	5 1/2	15	3/8	28	XSM 0612	XSA 0612	XSB 0612	5 1/2	11 1/2	2
-	XIF/X061806*	6	18	6	7 1/2	19 1/2	7 13/16	5 1/2	21 1/8	3/8	33	XSM 0618	XSA 0618	XSB 0618	5 5/8	16 7/8	3
-	XIF/X062406*	6	24	6	7 1/2	25 1/2	7 3/4	5 1/2	27	3/8	59	XSM 0624	XSA 0624	XSB 0624	5 5/8	22 7/8	4
-	XIF/X063606*	6	36	6	7 1/2	37 1/2	7 13/16	5 1/2	39	3/8	84	XSM 0636	XSA 0636	XSB 0636	5 5/8	34 7/8	6
XIFC/X070704	XIF/X070704	6 7/8	6 7/8	4	7 15/16	7 15/16	5 5/16	6 3/8	9 1/8	3/8	13	XSM 0707	XSA 0707	XSB 0707	6 1/2	6 1/2	1 1/2
-	XIF/X071603*	7	16	3 1/2	8 1/2	17 1/2	5 5/16	6 1/2	18 7/8	3/8	36	XSM 0716	XSA 0716	XSB 0716	6 1/2	15 1/2	3
-	XIF/X083206*	8	32	5 7/8	9 1/2	33 1/2	7 7/8	7 1/2	35	3/8	87	XSM 0832	XSA 0832	XSB 0832	7 1/2	31 1/2	7 1/2

\* Limited Approvals



# Customer Design Sheet

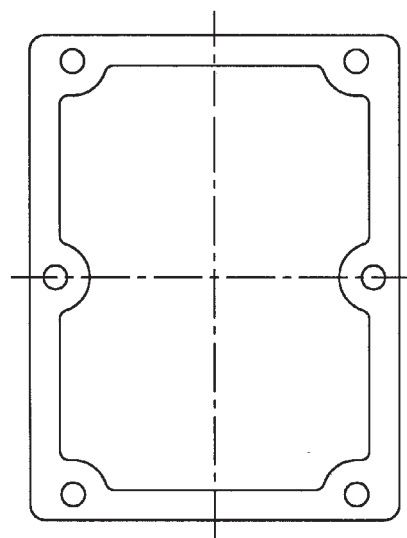


BOX LAYOUT

CAT # XIF (C)(X) \_\_\_\_\_

N4 O RING (XIF (C) Only)

MOUNTING PAN



# Control Station

## STANDARD FEATURES

- Lightweight, corrosion-resistant, copper-free aluminum alloy (0.3% max. copper content).
- All operating shafts are stainless steel for corrosion resistance.
- Durable cast on lugs cannot get lost.
- Ground screw is highly visible and accessible.
- Uniform wall thickness (not ribbed) for versatility of conduit openings assuring 5 full threads engagement and maximum available area for conduit drilling and tapping.
- Operators may be mounted through back wall for panel mounting.
- Box depth provides for the stacking of 2 contact blocks.
- Anodized aluminum operators install easily in the field.
- Switch operators include one contact block

TABLE A2 - CONTROL STATION BOXES

# of Operators	Surface Mount	Panel Mount*	Std. Cond. Size (in.)
1	X1	X1P	¾
2	X2	X2P	¾
3	X3	X3P	¾
4	X4	X4P	1
5	X5	X5P	1¼
6	X6	X6P	1¼
7	X7	X7P	1¼
8	X8	X8P	1¼
12	X12	X12P	1½
15	X15	X15P	1½
18	X18	X18P	1½

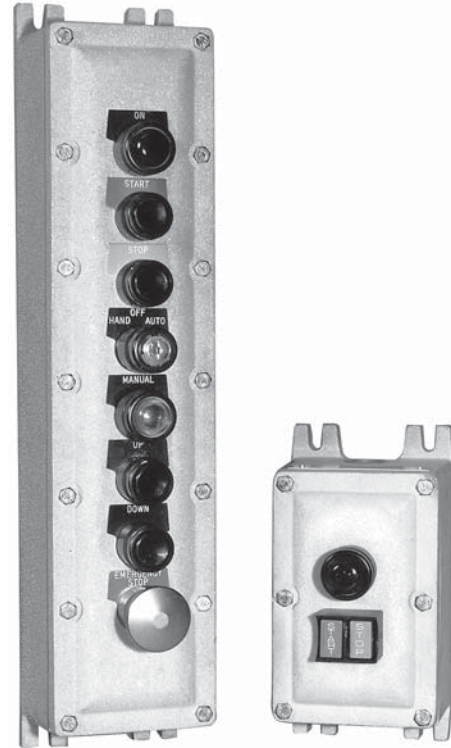
\*Panel Mount: Operators mounted in back, add P to operator suffix.

Surface Mount: Operators mounted in cover.

NOTE: All operator holes are 3/4" - 14 NPSM

TABLE B2 - PILOT LIGHTS & LIGHTED PUSHBUTTON (SURFACE MOUNT)

Lens Color	SUFFIX NOS. FOR 120V PILOT LIGHTS		
	Guarded Candleabra Base XL	Guarded Slide Base XLS	Lighted Pushbutton** Unguarded XLP
Amber	337	343	30
Blue	338	344	35
Clear	339	345	40
Green	340	346	45
Red	341	347	50
White	342	348	55



## CERTIFICATIONS

Class I, Division 1, Groups C & D  
Class II, Groups E, F & G



For Type 4 or special machining options-see XIFC Series  
Listed enclosures must use Adalet auxiliary devices only

\*\*CSA certified products require guarded pilot devices

## Box &amp; Suffix Numbers

TABLE C2 - SELECTOR AND KEY SWITCH SUFFIX NUMBERS (SURFACE MOUNT)

Contact Block / Cam		SELECTOR SWITCH SUFFIX NUMBERS					KEY SWITCH SUFFIX NUMBERS			
		Standard Selector Switch	Selector Switch w/Padlock	Spring Ret. Center from R & L	Spring Ret. Center from R	Spring Ret. Center from L	Standard Key Switch	Spring Ret. Center from R & L	Spring Ret. Center from R	Spring Ret. Center from L
		XHSS	XHSSPL	XHSSC	XHSSR	XHSSL	XHKSS	XHKSSC	XHKSSR	XHKSSL
BT1A/1 NO NC	XO OX	6	283				82			
BT1B/1 NO NO	OX XO	7	284				83			
BT2/1 NO NO	OX OX	8	285				84			
BT3/1 NC NC	XO XO	9	286				85			
BT2/3 NO NO	XOO OOX	10	293	111	135	159	86	229	249	269
BT1B/2 NC NO	XOX XXO	11	288	112	136	160	87	224	244	264
BT2/2 NO NO	XOX OOX	12	289	113	137	161	88	225	245	265
BT3/2 NC NC	OXO XXO	13	290	114	138	162	89	226	246	266
BT3/3 NC NC	OXX XXO	14	294	115	139	163	90	230	250	270
BT1A/2 NO NC	OXO OOX	15	287	116	140	164	91	223	243	263
BT1A/3 NO NC	OXX OOX	16	291	117	141	165	92	227	247	267

TABLE D2 - PUSHBUTTON SUFFIX NUMBERS (SURFACE MOUNT)

	Contact Style	Momentary Pushbutton XHPBS	Momentary Pushbutton w/Padlock XHPBSPL	Mushroom Head Momentary <sup>1</sup> XHPBMS	Dual Pushbutton <sup>2</sup> Momentary XHDPBS	Dual Pushbutton <sup>2</sup> w/Lockout XHDPBSPL	Dual Pushbutton <sup>2</sup> Maint XHDMCS	Dual Pushbutton <sup>2</sup> Maint. w/Lock XHDMCSPL
BT1A	1NO/1NC	1	307	106	72	322	77	327
BT2	2NO	2	308	107	73	323	78	328
BT3	2NC	3	309	108	74	324	79	329
BT4	1NO	4	310	109				
BT5	1NC	5	311	110				

Pushbuttons furnished with Black collars and knobs as standard. Optional knobs: Green, Red. Optional Collars: Blue, Green, Gold or Red.

Maintained, push-pull operator available, but requires special spacing. Consult factory.

<sup>1</sup>Standard knob is Red. Black or Green available.

<sup>2</sup>Standard with one Green knob labeled "Start" and one Red knob labeled "Stop." Unlabeled Black knobs available.

**Other pilot devices available – Consult Factory.**

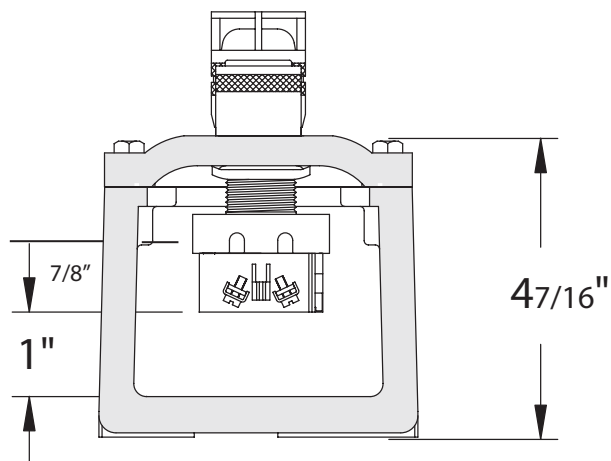
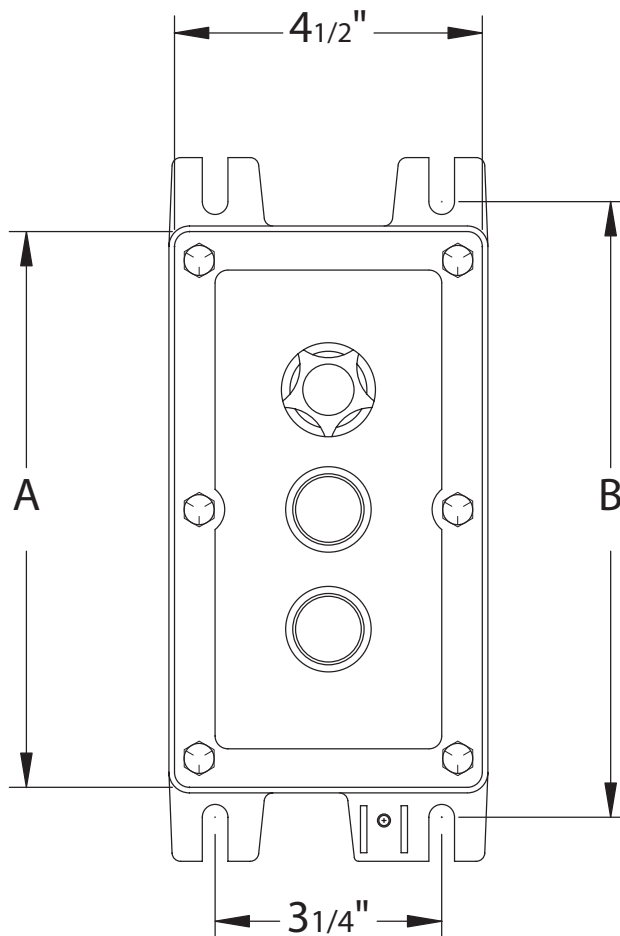
# CONTROL STATION

## Control Station

DIMENSIONS					
Enclosure	Nom. Inside Dimensions	Dimensions (in.)		Est. Weight (lbs.)	Std. Conduit* Size (in.)
		A	B		
X1	030303	4 1/2	5 1/2	5	3/4
X2	030603	7 1/16	8	7	3/4
X3	030703	8 1/8	9	8	3/4
X4	030903	10 1/16	11	10	1
X5	031103	12 1/16	13	11	1 1/4
X6	031303	14 1/16	15	12	1 1/4
X7	031503	16	17	13	1 1/4
X8	031803	19	20	16	1 1/4
X12	032403	25 1/16	26	21	1 1/2
X15	033003	31 1/8	32 1/8	28	1 1/2
X18	033603	37 1/4	38 1/8	33	1 1/2

Control Stations have conduit openings centered on top and bottom.

\*Consult factory for other conduit sizes.



Second contact block allowed with insulating paper added.

## Class 1 Div 1 Pendant/Operator Station

**STANDARD FEATURES**

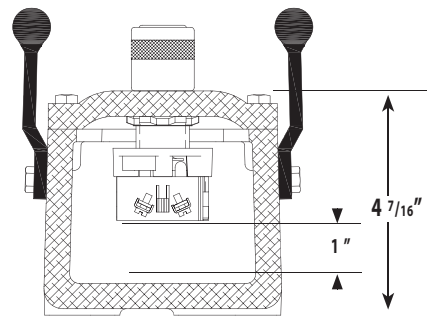
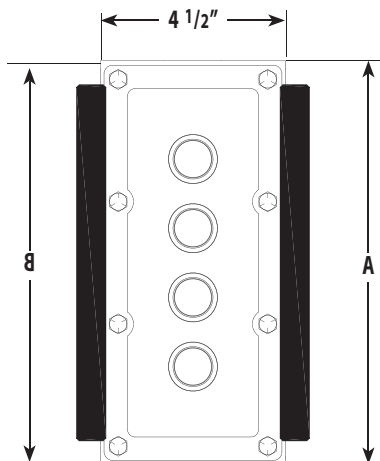
- Six standard sizes
- Standard feed thru conduit entries
- Enclosures rated NEMA 4x, 7, 9
- Populated with Adalet pushbuttons, pilot lights, selector switches or emergency stops
- ATEX and IECEx versions available, consult factory
- Optional side handles and stainless steel hanger for ease of handling
- Optional safety yellow coating for high visibility

**CERTIFICATIONS**

- Class I, Division 1, Groups C & D
- Class II, Groups E, F & G



CSA Certified products require guarded pilot devices

**Dimensions**

Catalog Number	Enclosure/Listing Tag	# of Operators	Normal Inside Dimensions	Outside Dimensions		Est Weight (lbs)	Std Conduit Size (in)	
			W x L x D	A	B		Top/Bottom	
X2CP-N4	XIFC 030603-N4	2	3" x 6" x 3"	7-1/16"	8	7	3/4"	
X3CP-N4	XIFC 030703-N4	3	3" x 7" x 3"	8-1/8"	9	8	3/4"	
X4CP-N4	XIFC 030903-N4	4	3" x 9" x 3"	10-1/16"	11	10	1"	
X6CP-N4	XIFC 031303-N4	6	3" x 13" x 3"	14-1/16"	15	12	1-1/4"	
X8CP-N4	XIFC 031803-N4	8	3" x 18" x 3"	19"	20	16	1-1/4"	
X12CP-N4	XIFC 032403-N4	12	3" x 24" x 3"	25-1/16"	26	21	1-1/2"	

# Control Station

## Ordering Information

To order control stations, determine the number of operators required. Select the control station box by operator quantity and mounting type from Table A2. Order operators by suffix numbers from Tables B2, C2 and D2. Add suffix numbers to box number and separate by dashes. All operator holes must be filled. Use suffix "0" for plugs to fill unused space. Installation of operators will be made from top to bottom in sequence as listed. Select optional legend plates from Table F2 below.

**TABLE F2 - STANDARD MARKING**

PUSHBUTTON / PILOT LIGHTS			SELECTOR SWITCHES	
Blank	Slow	Reset	Run-Jog	Open-Off-Close
Start	Open	In	Hand-Auto	Fast-Off-Slow
Inch	Close	Out	Forward-Reverse	Run-Auto-Jog
Stop	Up	Left	Fast-Slow	Hand-Off-Auto
Run	Jog	Right	Open-Close	Forward-Off-Reverse
Forward	On	Low	Up-Down	1-Off-2
Reverse	Off	High	Off-On	Up-Off-Down
Fast	Back	Down		
		E-Stop		

Legend plates are anodized aluminum with engraved letters on black background.

Stop has red and start has green background.

Special engraved legend plates can be supplied.

## Contact Ratings

**MAX RATING: TYPE BT CONTACT BLOCKS**

		AC				DC			
Volts		110	220	440	550	24/28	120	240	600
Make & Emergency Interrupting Capacity	A	60.	30.	15.	12.	5.7	1.1	0.5	0.2
Normal Load Break	A	6.	3.	1.5	1.2	5.7	1.1	0.5	0.2
Continuous Current	A	10.	10.	10.	10.	5.	10.	10.	10.5

# Dust-Ignition Proof Enclosures

## STANDARD FEATURES

- 9 standard sizes available
- Wall mounting feet
- Watertight silicone gasket
- Stainless steel hardware
- Four #10-32 weld nuts for optional mounting panel (mounting panels sold separately)
- Grounding studs on inside of box and cover

## DESIGN OPTIONS

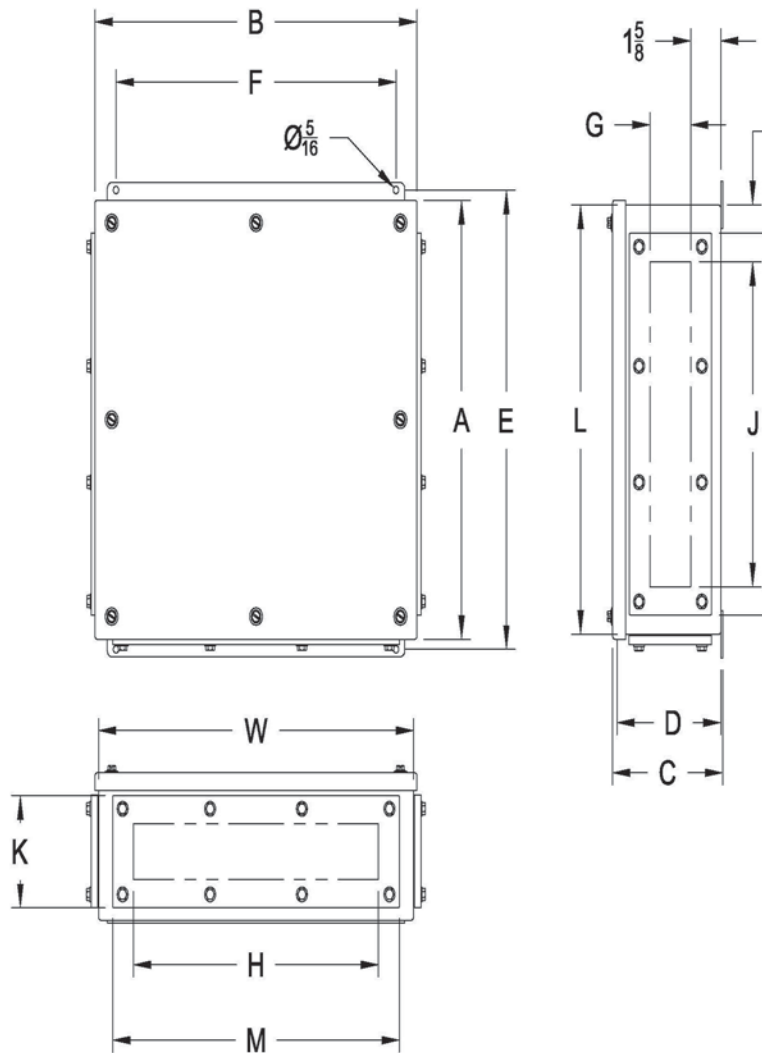
- Mounting panels - available in painted steel or stainless steel
- Aluminum gland plates
- Conduit drilling & tapping from 1/2" NPT to 3" NPT
- Custom sizes

## MATERIAL

- Enclosure - 14 gauge / Type 316L stainless steel
- Gland plates - copper free aluminum (3/10 of 1%)
- Cover bolts - stainless steel 316L

## COMPLIANCES

Class II, Division 1, Groups EFG  
 Class III  
 UL 1203  
 CSA C22.2 No. 25  
 Type 4X, 9  
 UL 50



Catalog #	Enclosure Dimensions			Overall			Mounting Feet.		Gland Plate Opening			Gland Plate Area		
	L	W	D	A	B	C	E	F	G	H	J	K	M	N
D9SC-161206	16	12	6	16-1/2	12-1/2	6-1/4	17-1/2	10	2-1/2	10-1/8	11-5/8	4-5/8	11-1/8	14-1/8
D9SC-161608	16	16	8	16-1/2	16-1/2	8-1/4	17-1/2	14	4-1/2	14-1/8	11-5/8	6-5/8	15-1/8	14-1/8
D9SC-201608	20	16	8	20-1/2	16-1/2	8-1/4	21-1/2	14	4-1/2	14-1/8	15-5/8	6-5/8	15-1/8	18-1/8
D9SC-202008	20	20	8	20-1/2	20-1/2	8-1/4	21-1/2	18	4-1/2	18-1/8	15-5/8	6-5/8	19-1/8	18-1/8
DD9SC-241608	24	16	8	24-1/2	16-1/2	8-1/4	25-1/2	14	4-1/2	14-1/8	19-5/8	6-5/8	15-1/8	22-1/8
DD9SC-242410	24	24	10	24-1/2	24-1/2	10-1/4	25-1/2	22	6-1/2	22-1/8	19-5/8	8-5/8	23-1/8	22-1/8
DD9SC-302410	30	24	10	30-1/2	24-1/2	10-1/4	31-1/2	22	6-1/2	22-1/8	25-5/8	8-5/8	23-1/8	28-1/8
DD9SC-362410	36	24	10	36-1/2	24-1/2	10-1/4	37-1/2	22	6-1/2	22-1/8	31-5/8	8-5/8	23-1/8	34-1/8
DD9SC-363010	36	30	10	36-1/2	30-1/2	10-1/4	37-1/2	28	6-1/2	28-1/8	31-5/8	8-5/8	29-1/8	34-1/8

# FIRE ALARM

## Explosionproof Fire Alarm Systems

### STANDARD FEATURES

Fire alarm call stations, for installation in hazardous atmosphere locations where emergency control of fire alarm or signal circuits is required.

Station is painted red for easy identification. Housing and break glass hammer are cast aluminum alloy. Exposed operator parts are red anodized aluminum.

A yellow adhesive backed label "Caution-Stand Clear of Area in Front of Glass to Protect Eyes from Flying Glass", furnished for application above the alarm station.



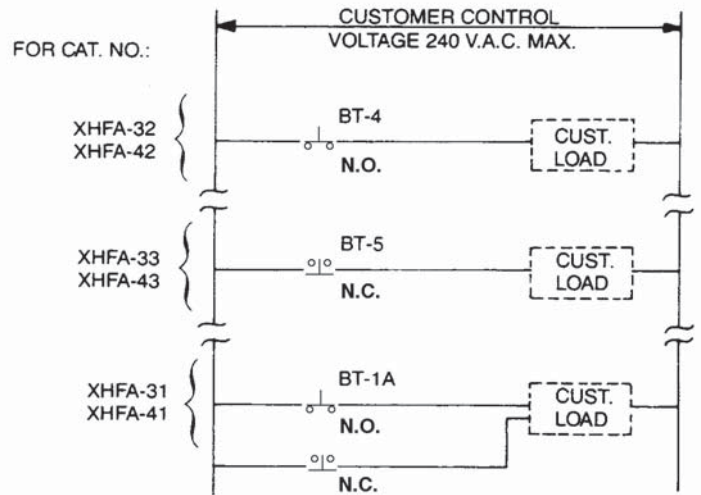
### COMPLETE ASSEMBLY

Catalog Number with 3/4" NPT conduit opening top and bottom	Catalog Number with 1" NPT conduit opening top and bottom
XHFA 31-N4	XHFA 41-N4
XHFA 32-N4	XHFA 42-N4
XHFA 33-N4	XHFA 43-N4

Replacement Glass: Catalog Number XHFG

### MAXIMUM CURRENT RATINGS FOR CONTROL CIRCUIT CONTACTS

Volts	Make Amperes	Break Amperes	Continuous Carrying
120	60	6	10



**NOTES** Contact blocks furnished as standard  
Contacts are shown as held in their actuated position.

### CERTIFICATIONS

- Class I, Division 1, Groups C & D
- Class II, Groups E, F, G
- Type 4
- UL Standard 689
- UL Standard UL38 manually activated signaling boxes for use with Fire Protection Signaling Systems

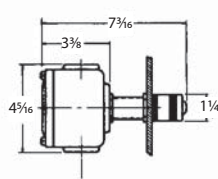




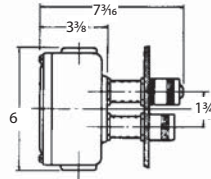
# Explosionproof & Dust-Tight Control Station Box For Panel Mounting



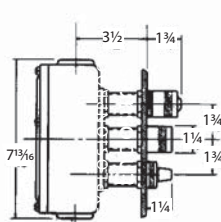
XB1



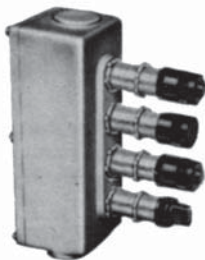
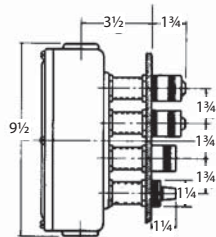
XB2



XB3



XB4



## STANDARD FEATURES

- Designed for mounting on panel boards so that pilot lights, pushbuttons and switch handles are flush with panel fronts and the bodies or housings are in back of the panel.
- Threaded necks are provided with locknuts to clamp fittings in place on panels when used with long operators. The parts extending beyond the face of the panel have a black anodized finish.
- Style XB is suitable for combinations of pilot lights, pushbuttons and selector switches for 600 volt maximum use and are large enough to include pilot light transformers. XB bodies have flat machined joint covers fastened with machine screws. Covers give maximum accessibility to interiors.
- All station boxes are drilled and tapped with  $\frac{3}{4}$ " NPSM thread for operator, or pilot lights. Unused openings must be plugged with XPP plugs. XB style boxes are suitably padded for two conduit openings on one end and one on opposite end. 1" maximum conduit size.

## COMPLIANCE

NEC Class I, Groups C & D

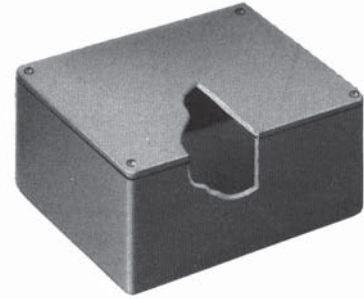
Class II, Groups E, F, G

Cat #	Description	Outside Dimensions (in.)			Weight Ea. (lbs.)
		W	L	D	
XB 1	1 station box – specify hubs	3 1/2	4 7/16	3 7/16	1 3/4
XB 2	2 station box – specify hubs	3 1/2	6 3/8	3 7/16	2
XB 3	3 station box – specify hubs	3 1/2	8 1/16	3 7/16	2 3/4
XB 4	4 station box – specify hubs	3 1/2	9 5/8	3 7/16	3 1/4

# UNFLANGED

## Surface Mount, Unflanged Junction Boxes

Catalog #	Inside Nom. Dimensions			Side Wall Thickness	Ship Weight
	W	L	D		
JP 020401	2 3/4	4 1/4	1 3/16	1/8	1
JP 030302	3 1/2	3 1/2	2 1/8	1/8	1
JP 030303	3 5/16	3 3/16	2 7/16	5/16	2
JP 040403	4	4	2 1/2	5/32	1 1/2
JP 040404	4	4	4	1/4	3
JP 040603	4	6	2 1/2	1/4	3
JP 040604	4	6	4	7/32	4
JP 040804	4	8	4	5/16	6
JP 041204	4	12	4	5/16	8
JP 060603	6	6	3 1/2	5/16	6
JP 060604	6	6	4	5/16	6
JP 060606	6	6	6	5/16	7
JP 060804	6	8	4	5/16	7
JP 060806	6	8	6	5/16	10
JP 061004	6	10	4	5/16	9
JP 061204	6	12	4	5/16	10
JP 061206	6	12	6	5/16	11
JP 080804	8	8	4	5/16	9
JP 080806	8	8	6	5/16	11
JP 080808	8	8	8	5/16	12
JP 081004	8	10	4	5/16	9
JP 081006	8	10	6	5/16	13
JP 081008	8	10	8	5/16	15
JP 081204	8	12	4	5/16	11
JP 081206	8	12	6	5/16	16
JP 101204	10	12	4	5/16	12
JP 101206	10	12	6	5/16	18
JP 101208	10	12	8	5/16	21
JP 121204	12	12	4	5/16	17
JP 121206	12	12	6	5/16	21
JP 121208	12	12	8	5/16	24



### CERTIFICATIONS

CSA Certified LR28852

UL Listed E33075



LISTED 4375

